

~~UNCLASSIFIED~~

[Redacted Box]

SG1A

July 1972

SECTION IV - ESP AND PSYCHOKINESIS

1. (U) The reader by this time has realized that it is very difficult to speak of one area of psychic phenomenon without overlapping into other areas. There really can be no distinct separation, for example, between apports and certain aspects of telepathy; hypnosis also enters into this area. In an attempt to illustrate the various subjects in parapsychology, however, artificial sections were established. This is the reason for a separate part in apports and ESP. Some aspects of hypnosis, depending on its ultimate use, falls within parapsychology, some areas into medicine; therefore, hypnosis is presented as a separate section outside of this parapsychology discussion.

2. (U) Soviet research in ESP was started in the 1920's at Leningrad University by V.M. Bekhterev. In his early work, Bekhterev collaborated with V.L. Durov to investigate the effects of mental suggestion on a group of performing dogs (62). It was believed that telepathic communication depended on electromagnetic radiation. Doctor L.L. Vasilev (95-97), shown in Illustration One, at the Bekhterev Brain Institute set out to identify these electromagnetic waves that carry telepathy. By 1937, Vasilev had amassed evidence that known electromagnetic waves do not carry telepathy. Tests were conducted in electrically shielded chambers and over extreme distances denying the passage of electromagnetic fields (98). Some of the long range telepathy experiments have been published (63,99,100) explaining the various techniques employed including classical tests with Zener cards and more unique tests with strobe lights and codes.

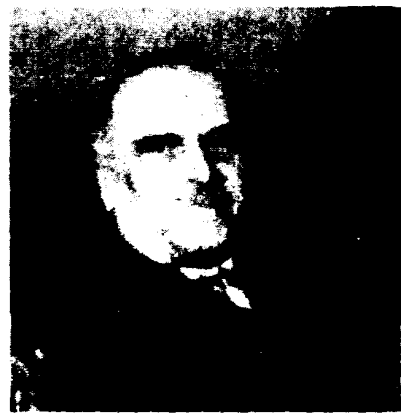


Illustration One - Professor L.L. Vasilev, pioneer Soviet parapsychologist considered the father of Soviet psychical research.

~~UNCLASSIFIED~~

UNCLASSIFIED

SG1A

[REDACTED]
July 1972

3. (U) Professor L. Vasilev died in late 1965 or early 1966 and the task of continuing telepathy research was taken by Doctor I. Kogan. Doctor Kogan is chairman of the Bio-Information Section of the Popov Radio and Technical Institute in Moscow. This individual is still trying to wed telepathy to the electromagnetic spectrum (101,102). Discussion as to the existence of telepathy has been bandied about the Soviet Union (103) and elsewhere (104) for some time. For the sake of research the Soviet Union accepts the validity of ESP even though the argument as to the mode of transmission continues. Professor E.K. Naumov (105), Chairman of the Division of Technical Parapsychology at the A.S. Popov Institute mentioned above, conducted long range telepathy tests from Moscow to several other cities. Illustration Two is a photograph of Naumov with associates.



Illustration Two - Sender Y. Kamenshi (left), Soviet physicist, and receiver K. Nikolaev, Soviet actor, with parapsychologist Edward K. Naumov (far right).

UNCLASSIFIED

SECRET

[Redacted]
July 1972

SG1A

4. (U) In 1967, the Soviet Maritime News reported, "Cosmonauts, when in orbit, seem to be able to communicate telepathically more easily with each other than with people on earth. A psi (short for psychic faculty) training system has been incorporated in the cosmonaut training program," but the News provided no further details. Some informal reports relayed to Ostrander and Schroeder (106) indicate that the Soviets are working on psi systems for space use, involving not just telepathy, but also precognition.

[Redacted]

SG1B

6. (U) As mentioned above, the Soviets seem preoccupied with the search for the energy that carries or facilitates telepathy transmission. Is it electromagnetic or not? The search for this unknown energy has led the Soviets to Kirlian photography; named after its inventors Semyon and Valentina Kirlian. The Kirlians developed a technique of photographing with a high frequency electrical field involving a specially constructed high frequency spark generator, tuned up and down between 75,000 to 200,000 electrical oscillations per second. Their first photographs showed turquoise and reddish-yellow patterns of flares coming out of specific channels within leaves. A magnified picture of a finger showed craters of light and flares (Illustration Three). By the 1960s research on bioluminescence revealed by Kirlian photography was going on in many Soviet universities. Perfected techniques of photographing the play of high-frequency currents on humans, plants and animals, as well as on inanimate matter have set the Soviets on some striking discoveries about the energetical nature of man. "Bio-plasma" is a term coined by the Soviets for bioluminescent phenomenon or energy. Scientists at the Kazakh State University at Alma-ata have found that illnesses tend to show up in advance as a disordered play of flares from the "bio-plasma" long before they manifest in the physical body. According to Ostrander and Schroeder, the Soviets may be attempting to link Kirlian photography with computers, among other things, to instantly analyze the spectra of colors appearing in the vari-colored flares from the living body.

SECRET

SECRET

SG1A

July 1972

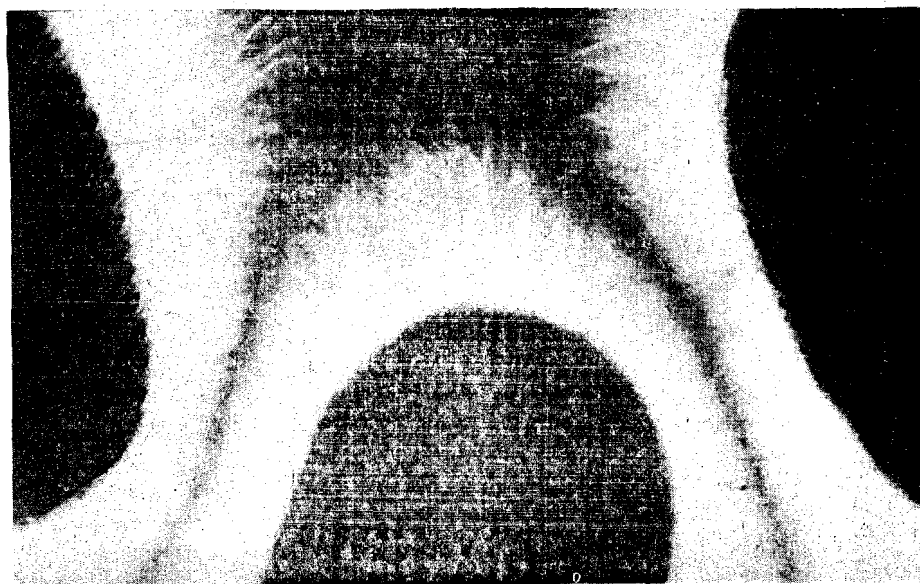
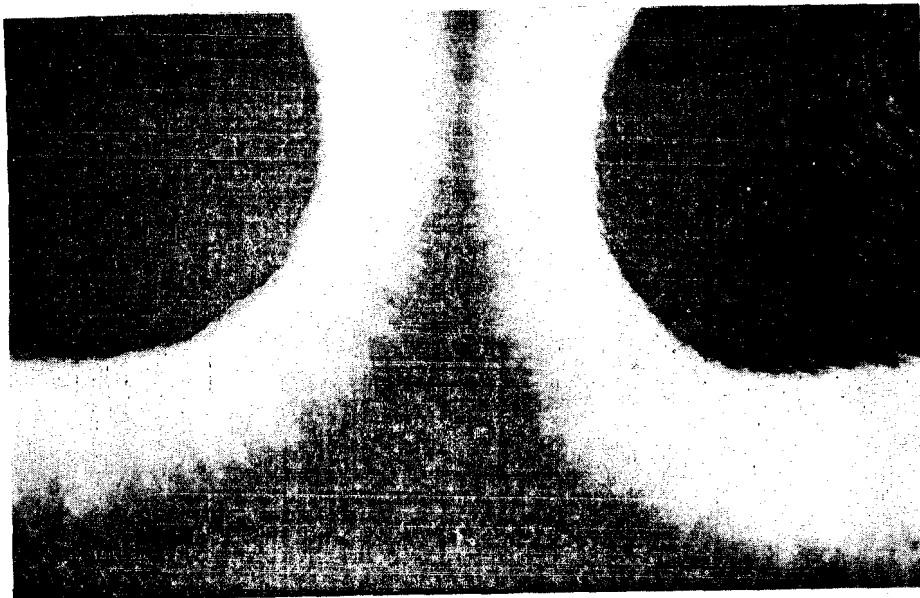


Illustration Three - Upper photograph displays flares of energy from fingers of the left and right hand of an individual by Kirlian photography. Lower photograph shows the fingers of three different people and how the aura of "energy" of each remains intact, yet interplays in long thread like fibers in the open area between them.

SECRET

CONFIDENTIAL

[REDACTED]
July 1972

SG1A

SG1B



8. (U) Doctor A. Podshibyakin, an electrophysiologist at the Institute of Clinical Physiology in Kiev, has found that by charting acupuncture points a correlation exists between the "bio-plasma" and changes on the surface of the sun. At the exact moment solar flares (sun spots) occur, there are changes in the electrical potential of the skin's acupuncture points. These electrical charges are measured by a tobiscope (probably a simple wheatstone bridge device). In some way, the "bio-plasma" of the body is sensitive to these solar explosions the instant they occur even though it takes about two days for the cosmic particles to reach the earth.

9. (U) The most significant use of Kirlian photography is in the area of psychokinesis or mind over matter (PK). Doctor Genady Sergeyev (75) of the A.A. Uktomskii Military Institute in Leningrad believes Kirlian photography may uncover the mechanism of PK. Sergeyev is a prominent mathematician for the Soviet military who works closely with an electrophysiologist from the University of Leningrad, Doctor L. Pavlova. Sergeyev has devised important mathematical and statistical methods for analyzing the EEG (107) which allowed parapsychologists to follow and depict the actions of telepathy in the brain (108). The type of work reported by Sergeyev in 1967 and 1968 is just now beginning to appear in the US efforts to understand the transmission of telepathy (109,110). Sergeyev has conducted several years of intensive lab research on the outstanding PK psychic in Leningrad, Nina Kulagina (pseudonym Nelya Mikhailova). Illustration Four is a photograph of Doctor G. Sergeyev and Illustration Five is a photograph of Mrs. Kulagina. Sergeyev registered heightened biological luminescence radiating from Kulagina's eyes during the apparent movement of objects by PK. Sergeyev postulates that the "bio-plasma" of the human body must interact with the environment to produce PK. Sergeyev emphasizes when target objects are placed in a vacuum, Kulagina is unable to move them. Barcus (111) in the United States reports some unusual occurrences during psychic photography especially of the eyes. Reportedly, Kulagina has caused the movement of a wide range of non-magnetic objects: (under strict scientific control) large crystal bowls, clock pendulums, bread,

NO FOREIGN DISSEMINATION

CONFIDENTIAL

SG1A

[REDACTED]
July 1972

matches, etc. In one test, a raw egg was placed in a salt solution inside a sealed aquarium six feet away from her. Researchers report she was able to use PK to separate the yoke from the white of the egg. Observations by Western scientists of Mrs. Kulagina's PK ability has been reported with verification of her authentic ability (112,113). These same Western scientists have reported that as of February 1971, they have not been able to visit or observe Mrs. Kulagina. A veil of secrecy has been placed on Sergeev and Mrs. Kulagina for unknown reasons.

10. (U) Rather than simply observing PK, the Soviets typically turned to instrumentation. Mrs. Kulagina was subjected to a number of physiological electronic measuring devices and tested for important body functions during her PK demonstrations. The Soviets found that at the moment an object begins to move, all of Mrs. Kulagina's body processes speed up drastically - heart, breathing, brain activity - and the electromagnetic fields around her body all begin to pulse in rhythm. Soviet researchers postulate that it was these rhythmic "vibrations" that cause objects to be attracted or repelled to her. Illustration Six shows a photographic sequence of Kulagina's PK ability.

SG1B

[REDACTED]

12. (U) Space does not permit a discussion on other important parapsychological phenomena such as eyeless sight (75,114-129), which appeared to be more of a fad than anything else. However since the mid 1960s, the "eyeless sight" fad has subsided and serious research has proceeded quietly at the State Pedagogical Institute in Sverdlovsk, off bounds to foreigners (75). Space in this report does not permit a discussion of psychotronic generators, devices which are reported to be able to store human bio-plasmic forces for later use (75). For further reading on ESP, see the non-cited bibliography; Section V, numbers 12-30.

UNCLASSIFIED

July 1972

SG1A

Illustration Four - Photograph
of G.A. Sergeyev, prominent
scientist at A.A. Uktomskii
Military Institute, Leningrad
with an assistant.



Illustration Five - Nina Kulagina,
who reportedly moves objects by
sheer will (PK).



UNCLASSIFIED

SG1A

July 1972

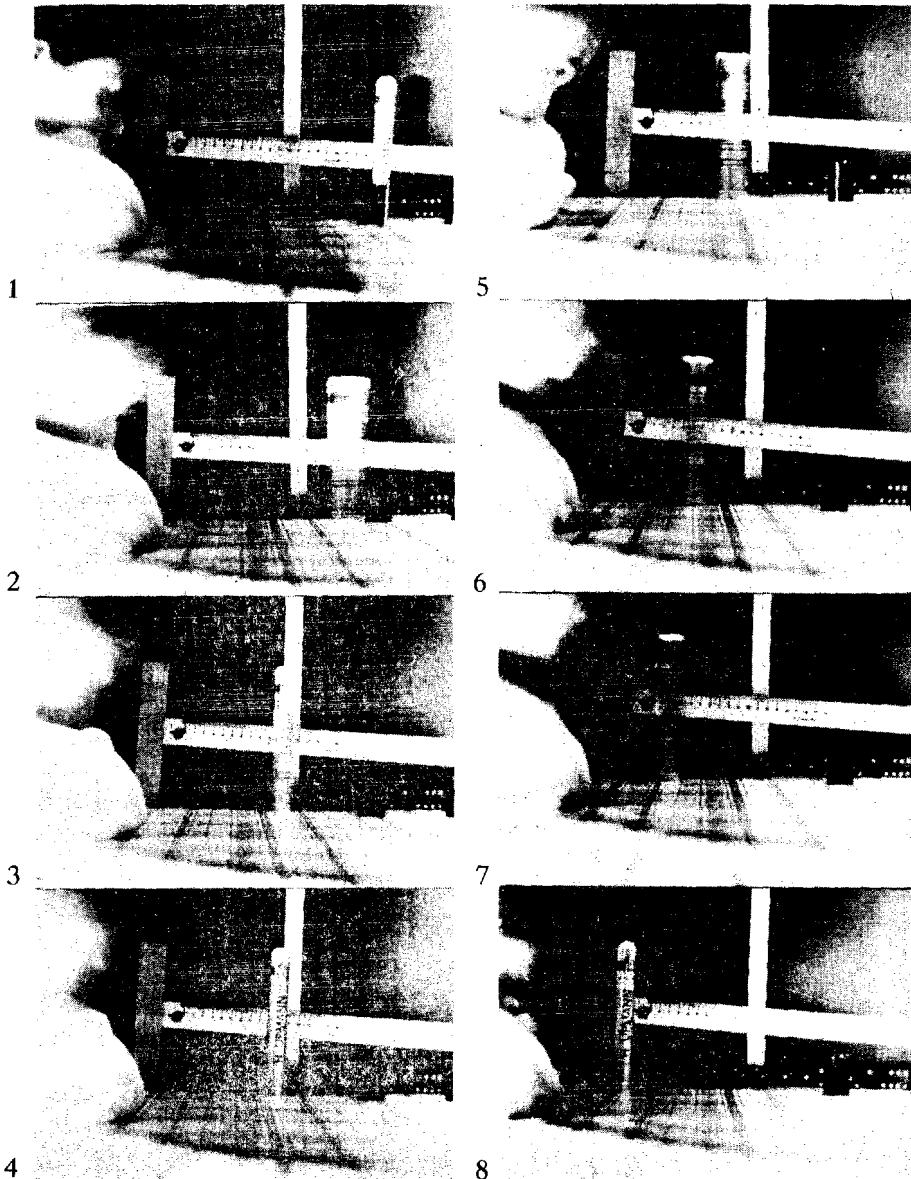


Illustration Six - This series of photos shows Nina Kulagina moving a metallic cigar tube by PK. Scale in background is in centimeters.

SG11

Approved For Release 2002/11/18 : CIA-RDP96-00787R000500250024-6

Approved For Release 2002/11/18 : CIA-RDP96-00787R000500250024-6