

THIS FILE IS MADE AVAILABLE THROUGH THE DECLASSIFICATION EFFORTS AND RESEARCH OF:

THE BLACK VAULT

THE BLACK VAULT IS THE LARGEST ONLINE FREEDOM OF INFORMATION ACT / GOVERNMENT RECORD CLEARING HOUSE IN THE WORLD. THE RESEARCH EFFORTS HERE ARE RESPONSIBLE FOR THE DECLASSIFICATION OF THOUSANDS OF DOCUMENTS THROUGHOUT THE U.S. GOVERNMENT, AND ALL CAN BE DOWNLOADED BY VISITING:

[HTTP://WWW.BLACKVAULT.COM](http://www.blackvault.com)

YOU ARE ENCOURAGED TO FORWARD THIS DOCUMENT TO YOUR FRIENDS, BUT PLEASE KEEP THIS IDENTIFYING IMAGE AT THE TOP OF THE .PDF SO OTHERS CAN DOWNLOAD MORE!

MANHATTAN DISTRICT HISTORY

BOOK I - GENERAL

VOLUME 12 - CLINTON ENGINEER WORKS

CENTRAL FACILITIES

APPENDIX D

W 3A

1305
107

UNCLASSIFIED

THIS DOCUMENT CONSISTS OF 143 PAGES
NO. 3 OF 4 SERIES A

~~UNCLASSIFIED~~

Classification (Cancelled) (Changed to _____)
By Authority of U.S.A.E.C. Oak Ridge (Mr. Callaly)
By H. Grooms Date 25 JAN 1949
Revised R.Y. Sherman 10-77-05
DD, SO-10.23

UNCLASSIFIED

~~SECRET~~

MANHATTAN DISTRICT HISTORY

BOOK I - GENERAL

VOLUME 12 - CLINTON ENGINEER WORKS, CENTRAL FACILITIES

Classification (Cancelled) (~~Changed to~~)
By Authority of U.S.A.E.C. Oak Ridge (Mr. Callahan)
By H. J. A. Grooms Date 25 JAN 1949
Revised R. D. Brown 10-17-05
00, 50-10.23

~~SECRET~~

~~SECRET~~
1946
Spec. Data
Clearance Required

~~SECRET~~

Classification (Cancelled) (Changed to _____)
By Authority of U.S. A.E.C. Oak Ridge (The Cellar)
By H. Williams Date 8 5 JAN 1949
R. D. Dora - 10-17-2005
00, S.O.-10.23

~~SECRET~~

MANHATTAN DISTRICT HISTORY
BOOK I - GENERAL
VOLUME 12 - OLINTON ENGINEER WORKS, CENTRAL FACILITIES
APPENDIX D - PHOTOGRAPHS & PLANS

Classification (Cancelled) (~~Changed to~~)
By Authority of U.S. A.F.C. Oak Ridge (Th. Callaly)
By L. J. Adams Date 25 JAN 1949
filed R. D. Dixon 10-17-2005
D.O., S.O.-10.23

~~SECRET~~

~~SECRET~~ DATA
Atomic Energy Act 1946
Specific Restricted Data
Clearance Required

MANHATTAN DISTRICT HISTORY

BOOK I - GENERAL

VOLUME 12 - CLINTON ENGINEER WORKS, CENTRAL FACILITIES

APPENDIX D - PHOTOGRAPHS & PLANS

<u>NO.</u>	<u>TITLE</u>
1	Cemesto Type Housing
2	House, Type "A", with Floor Plan (2 Sheets)
3	House, Type "B", with Floor Plan (2 Sheets)
4	House, Type "C", with Floor Plan (2 Sheets)
5	House, Type "D", with Floor Plan (2 Sheets)
6	House, Type "E", with Floor Plans (3 Sheets)
7	House, Type "F", with Floor Plan (2 Sheets)
8	House, Type "G", with Floor Plan (2 Sheets)
9	House, Type "H", with Floor Plan (2 Sheets)
10	House, Multi-Family, Type "K", with Floor Plans (3 Sheets)
11	House, Multi-Family, Type "L", with Floor Plans (3 Sheets)
12	House, Multi-Family, Type "N", with Floor Plans (3 Sheets)
13	House, Multi-Family, Type "T", with Floor Plan (2 Sheets)
14	House, Multi-Family, Type "U", with Floor Plan (2 Sheets)
15	Prefabricated Housing

7/1/12 11/1/12

Appendix D - Photographs & Plans (Cont'd)

<u>NO.</u>	<u>TITLE</u>
16	House, Prefabricated, Type "C-1", with Floor Plans, Types "C-1", "B-1, and "A-6" (4 Sheets)
16a	House, Prefabricated, Type "V", with Floor Plan, (2 Sheets)
17	House, Prefabricated, Type "S", with Floor Plan (2 Sheets)
18	House, Prefabricated, Multi-Family, One Bedroom, Type "VC-1", with Floor Plan (2 Sheets)
19	House, Prefabricated, Erection (4 Sheets)
20	Houses, Demountable, TDU, Types 2, 4, HL11, QF3, and QF31, with Floor Plans (10 Sheets)
21	Apartments (2 Sheets)
22	Dormitory, Type "H"
23	Dormitory, Type "S"
24	Trailer
25	Trailer Camps (2 Sheets)
26	Hutment
27	Hutment Area
28	Jackson Square and Vicinity
28a	Commercial Area, Jackson Square
28b	Post Office
28c	Theaters and Stores, Jackson Square
28d	Restaurant, Bowling Alleys, and Office Buildings, Jackson Square

XXXXXXXXXX

Appendix D - Photographs & Plans (Cont'd)

<u>NO.</u>	<u>TITLE</u>
28e	Commercial Area, Jackson Square
28f	Public Library
28g	Central Cafeteria
29	Commercial Area, Grove Center
30	Neighborhood Stores and Fire Station, West Village
31	Laundry No. 1, Town Center
31a	Laundry No. 2, West Village
32	Main Administration Building, Manhattan District
33	Main Warehouse District
34	Elementary School
35	High School (2 Sheets)
36	Administrative and Town Center Areas
37	Hospital
38	Pumping Station, Clinch River
39	Filtration Plant
40	Busses

D-1 CEMENTO TYPE HOUSING

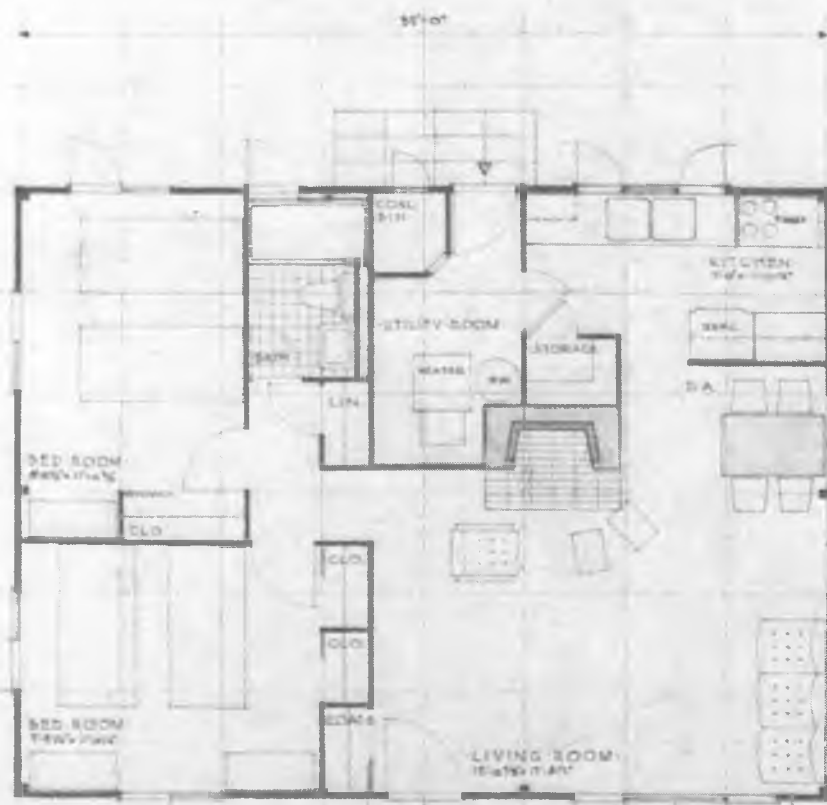


P1

D-2 HOUSE, TYPE "A", WITH FLOOR PLAN (2 Sheets)



D-2

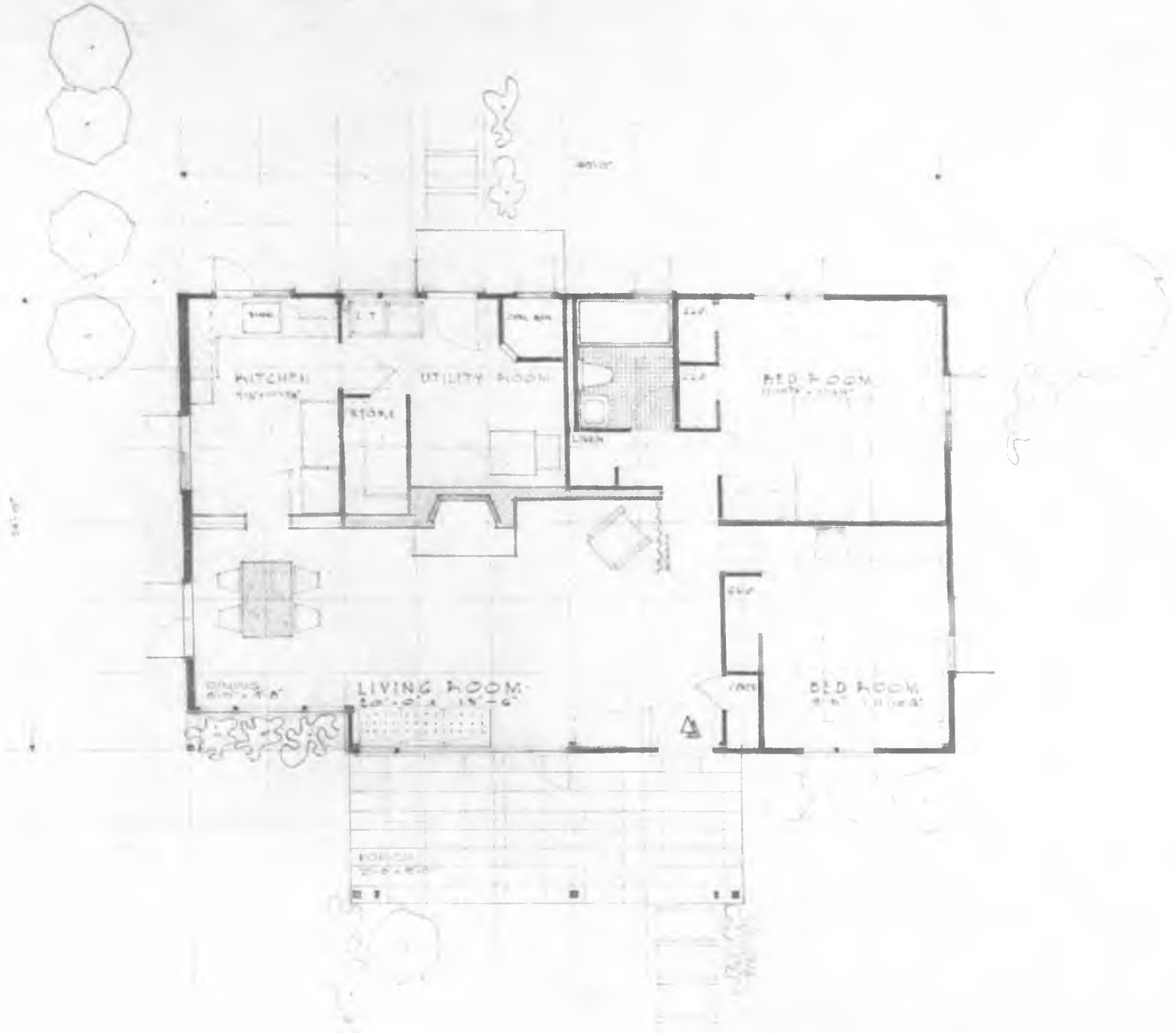


ONE FAMILY HOUSE -TYPE A

D-3 HOUSE, TYPE "B", WITH FLOOR PLAN (2 Sheets)



13



ONE FAMILY HOUSE - TYPE B

D-4 HOUSE, TYPE "C", WITH FLOOR PLAN (2 Sheets)



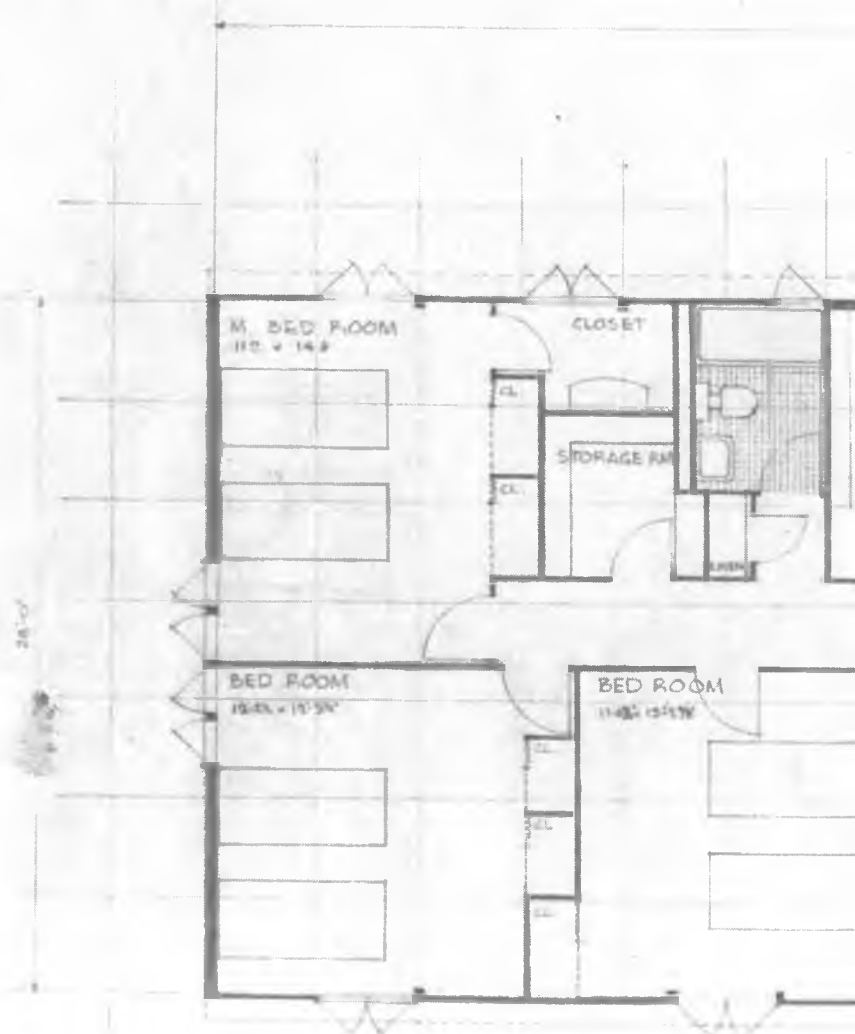
0.4

D-5 HOUSE, TYPE "D", WITH FLOOR PLAN (2 Sheets)



12

D-5

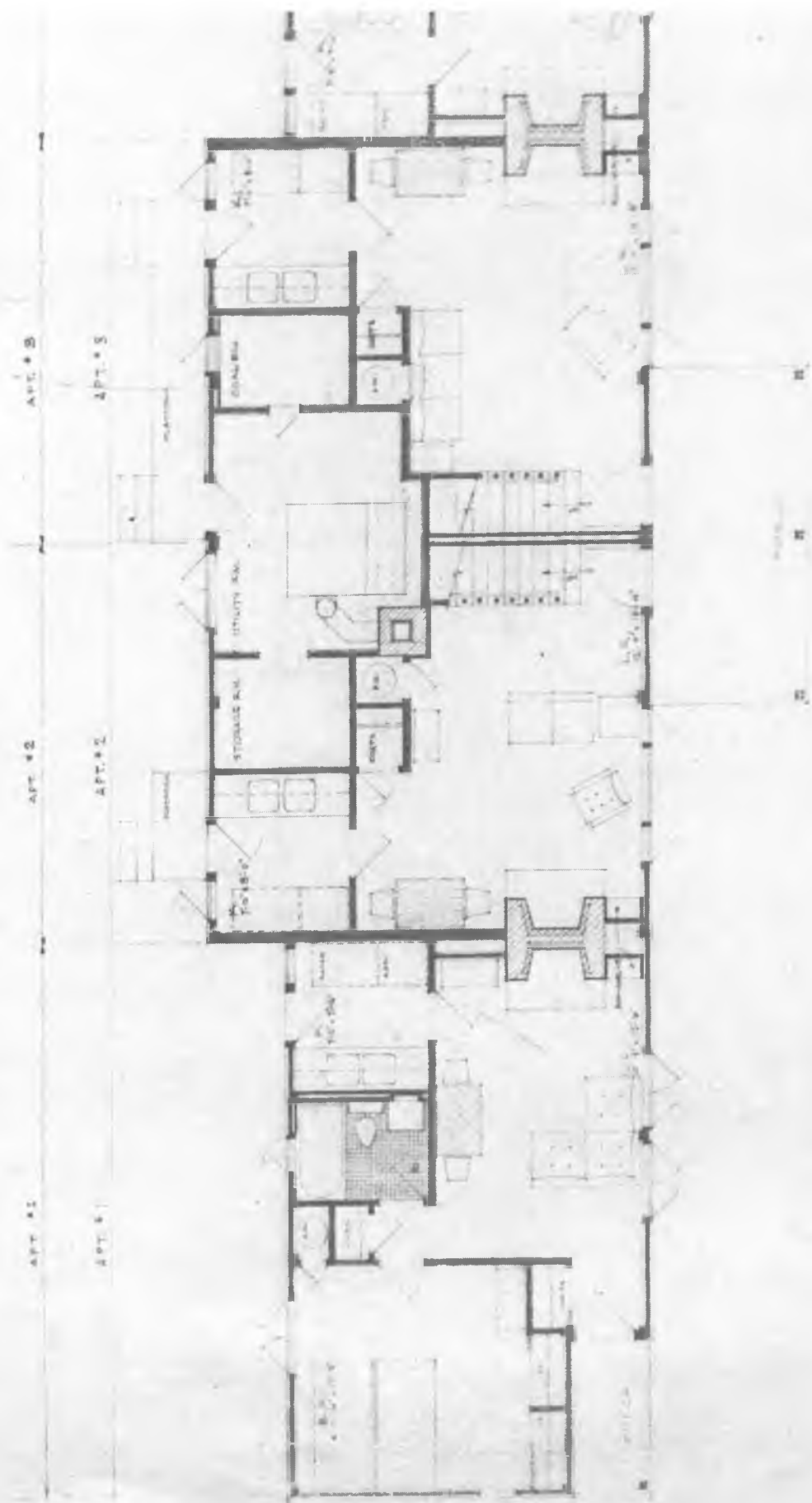


1ST FLOOR PLAN
4'-0"

D-6 HOUSE, TYPE "B", WITH FLOOR PLANS (3 Sheets)

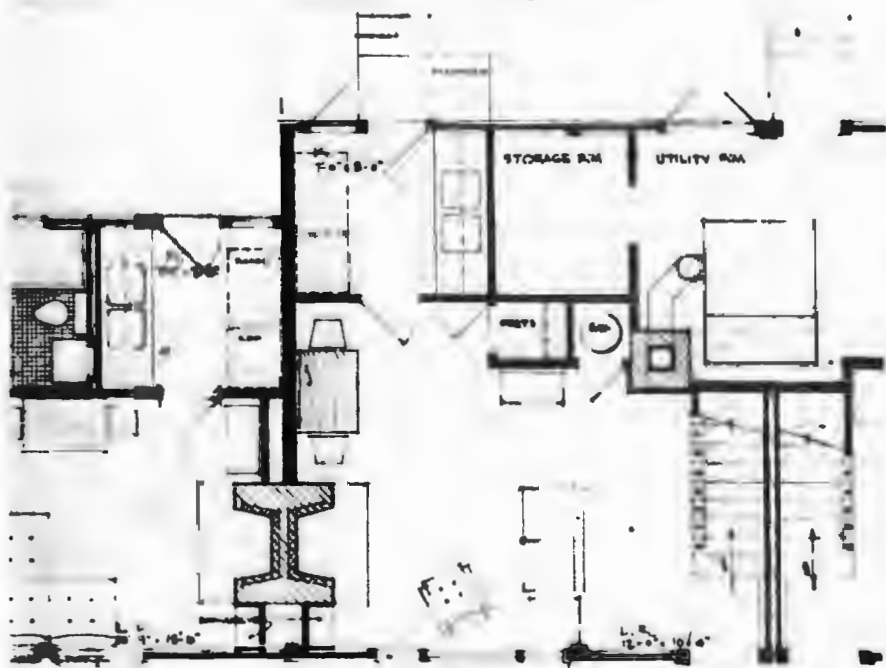


D-6



APT. #2

APT. #2



26-B

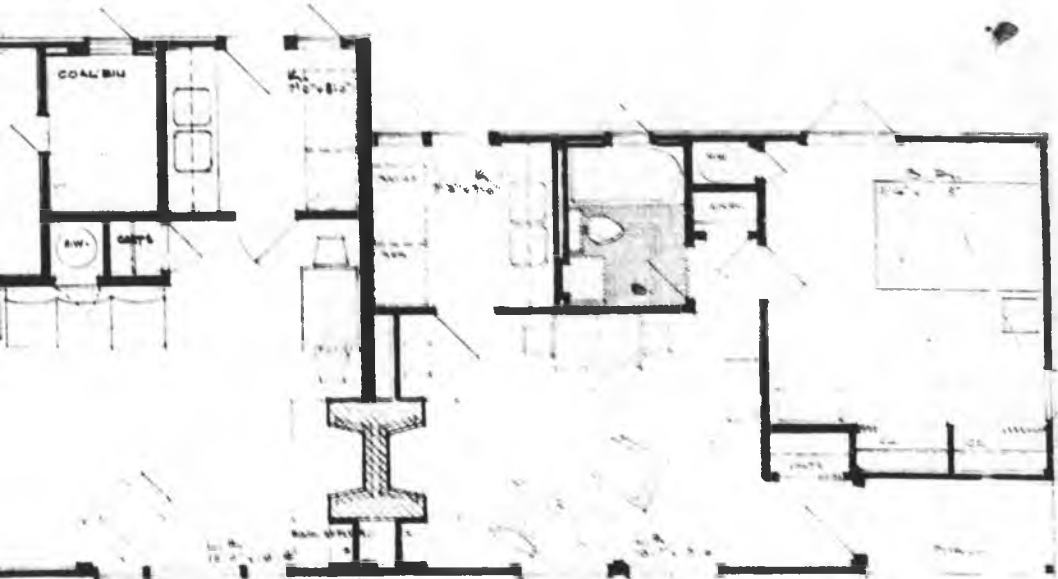
APT. # 3

12-01

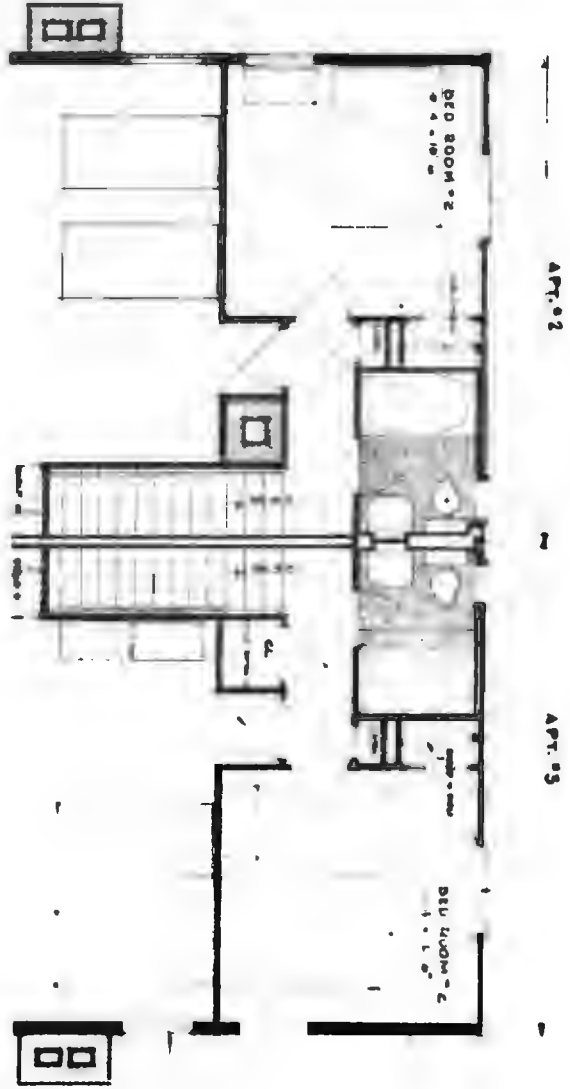
APT. # 3

12-02

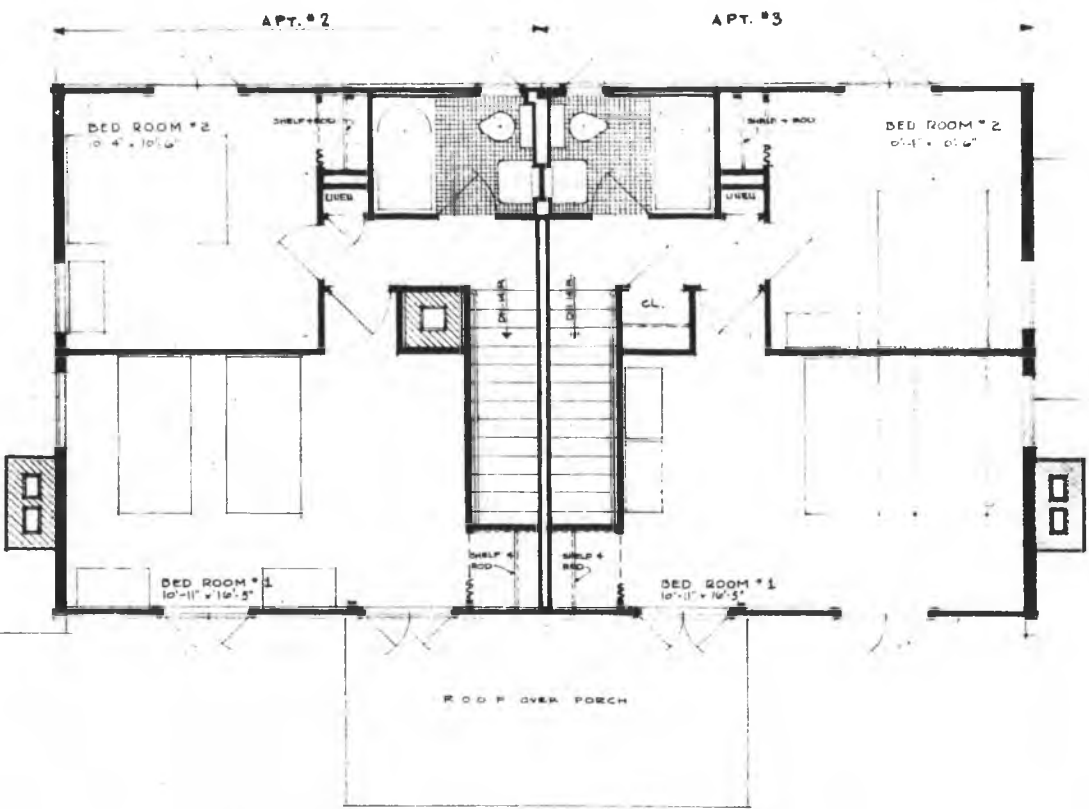
PLATFORM



FIRST FLOOR PLAN
FOUR FAMILY HOUSE -TYPE E



D6-2-A



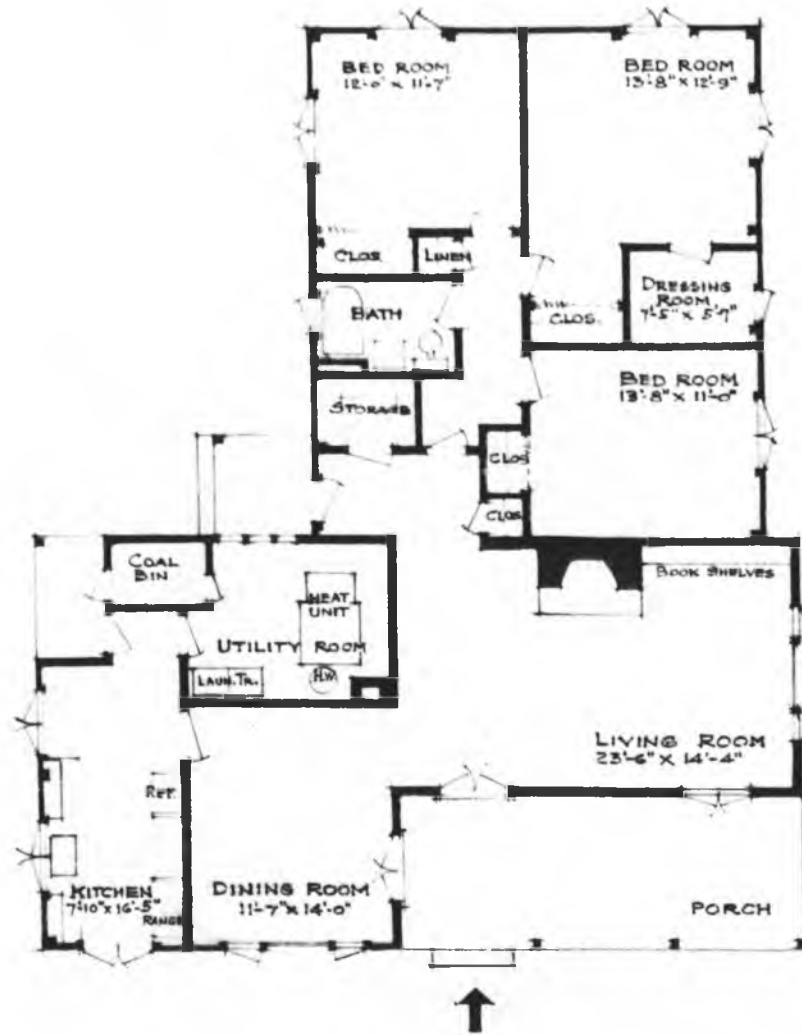
SECOND FLOOR PLAN
FOUR FAMILY HOUSE TYPE E

Plan-B

D-7 HOUSE, TYPE "F", WITH FLOOR PLAN (2 Sheets)



D
57

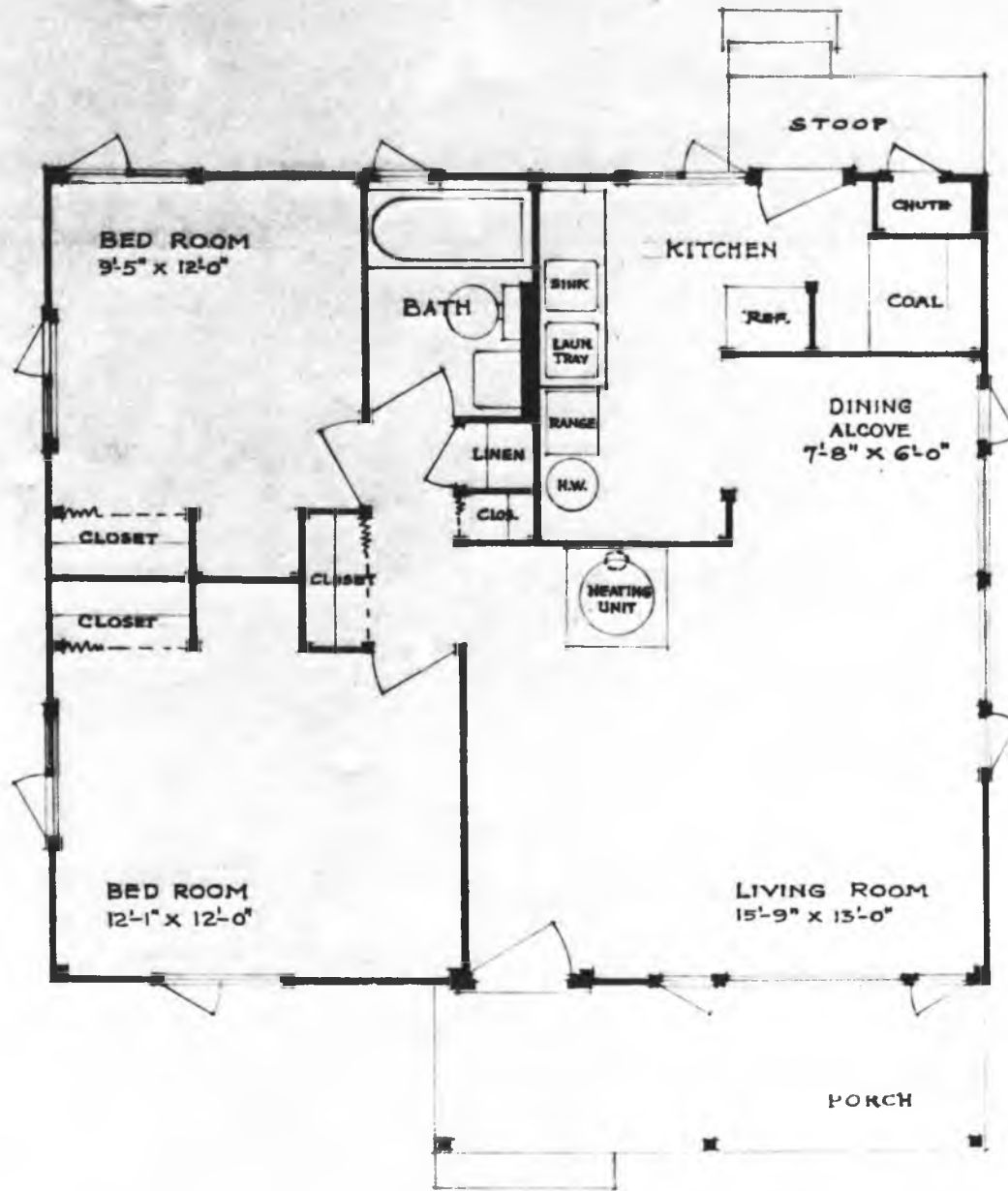


ONE FAMILY HOUSE TYPE "F"

D-8 HOUSE, TYPE "G", WITH FLOOR PLAN (2 Sheets)



8-1

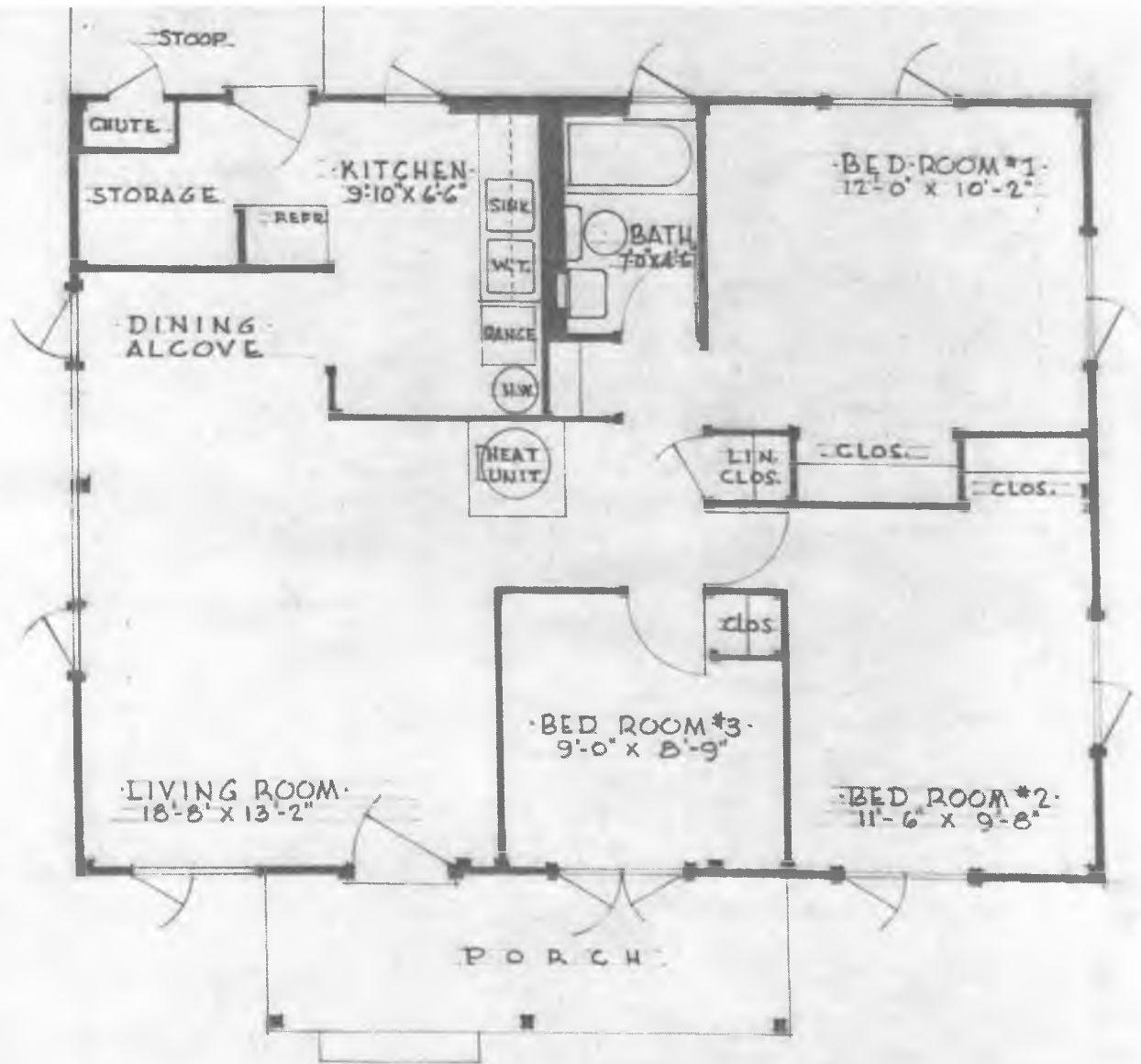


ONE FAMILY HOUSE TYPE G.

D-9 HOUSE, TYPE "H", WITH FLOOR PLAN (2 Sheets)



B.9

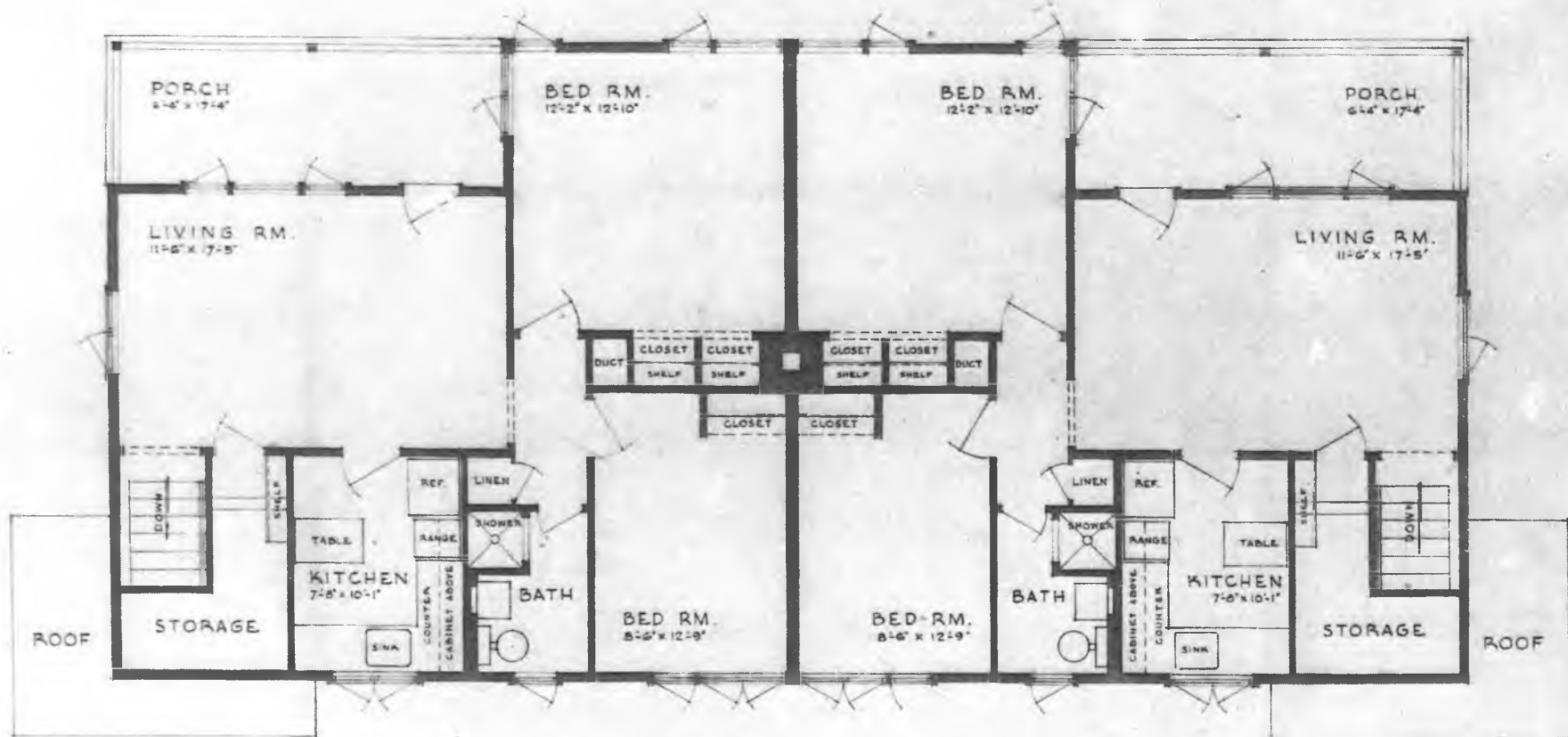


ONE FAMILY HOUSE TYPE H.

D-10 HOUSE, MULTI-FAMILY, TYPE "K",
WITH FLOOR PLANS (3 Sheets)



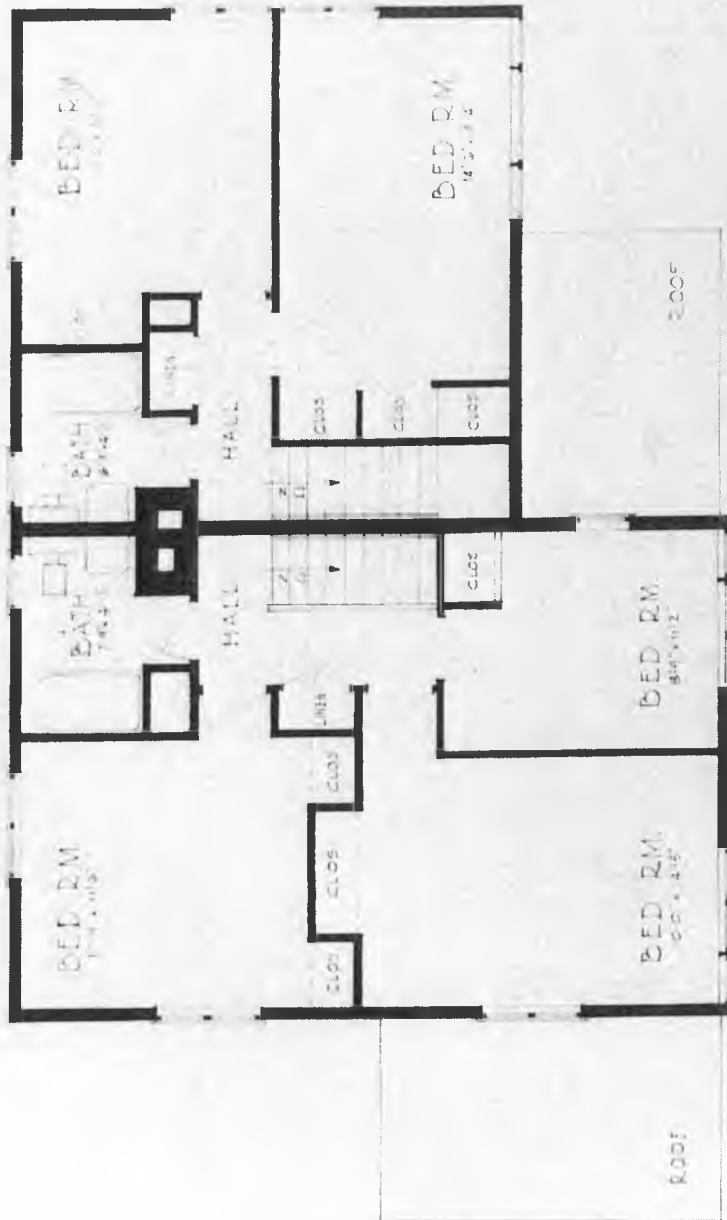
D-10



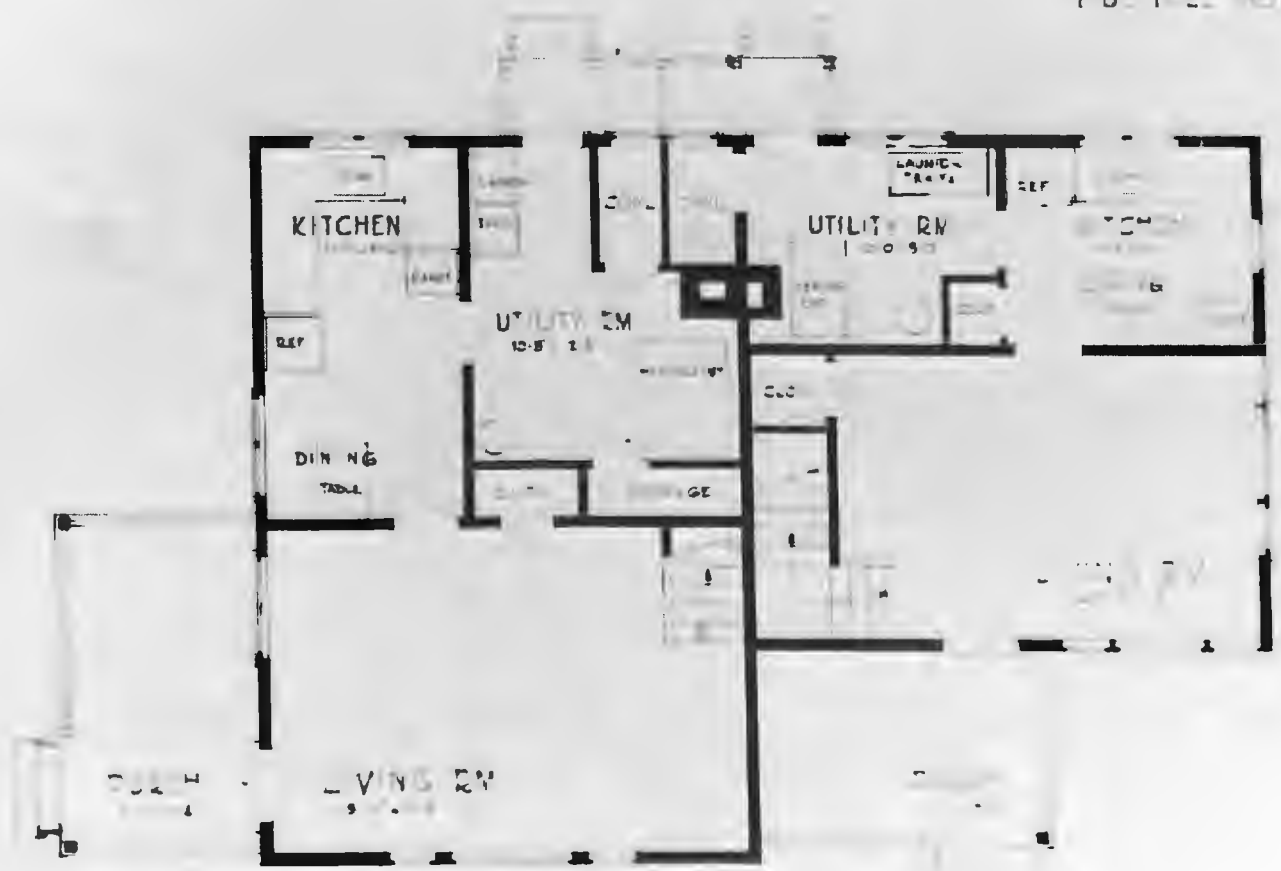
SECOND FLOOR PLAN
MULTIPLE HOUSING UNIT K

D-11 HOUSE, MULTI-FAMILY, TYPE "L",
WITH FLOOR PLANS (3 Sheets)





MULTIPLE HOLDINGS WITH L

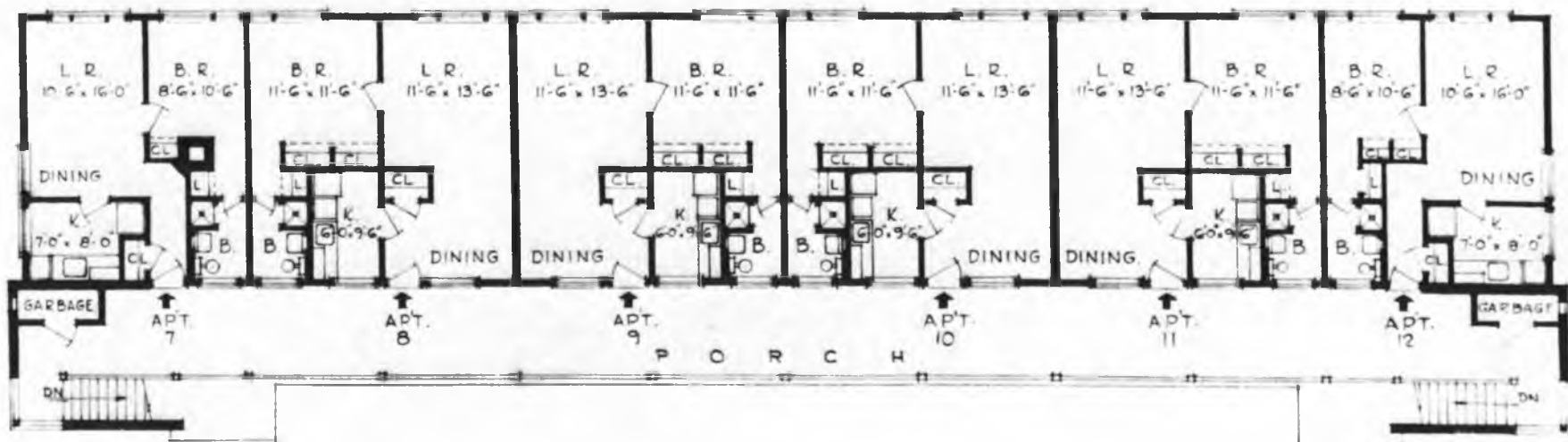


MULTIPLE HOLDINGS WITH L

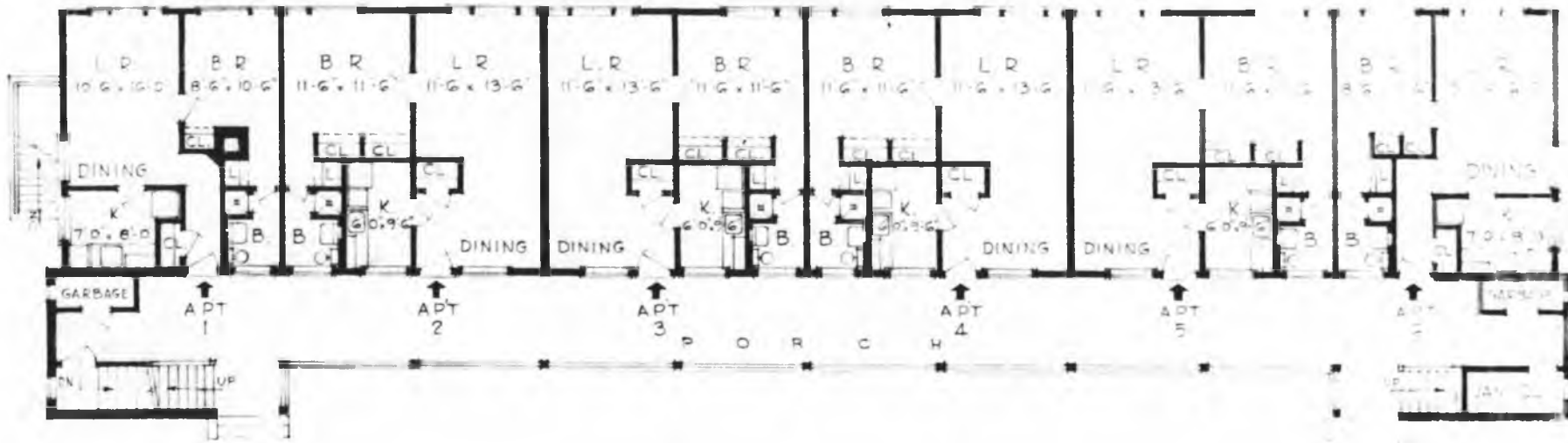
D-12 HOUSE, MULTI-FAMILY, TYPE "N",
WITH FLOOR PLANS (3 Sheets)

D-12...





SECOND FLOOR PLAN
MULTIPLE HOUSING UNIT N



FIRST FLOOR PLAN
MULTIPLE HOUSING UNIT N

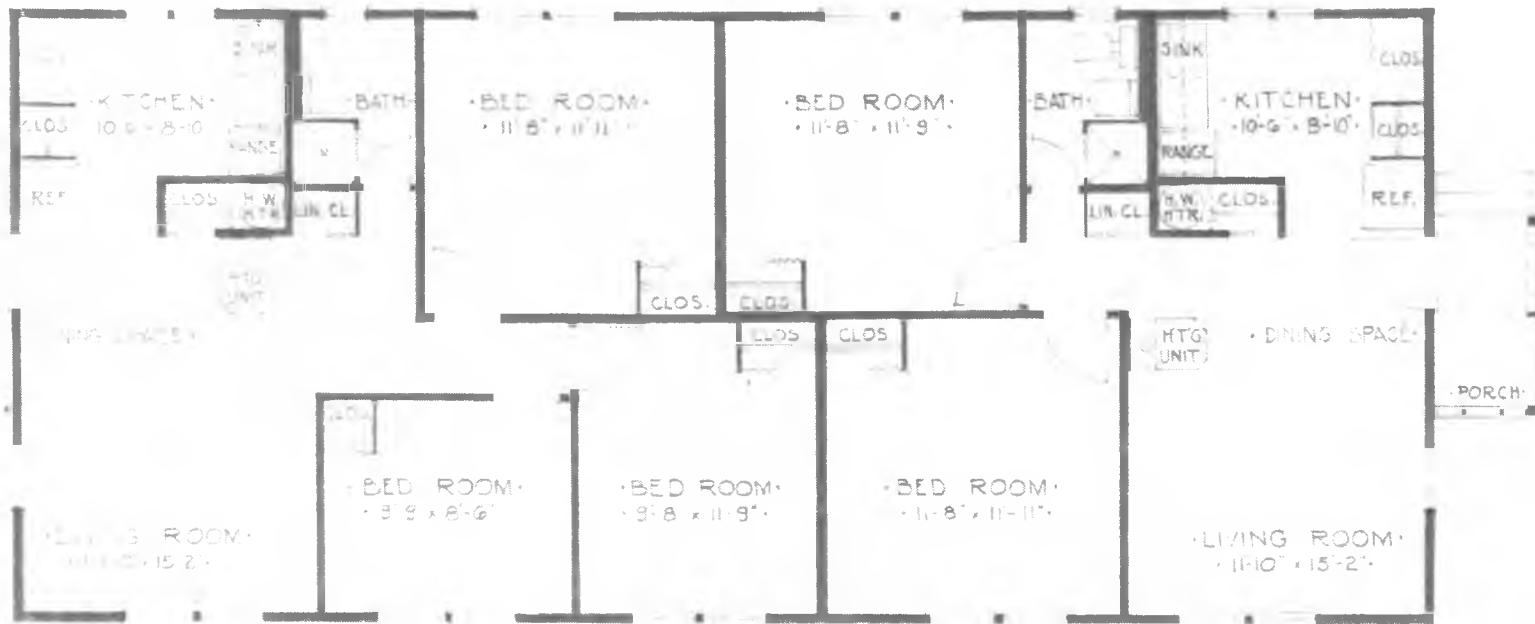
D-12

D-13 HOUSE, MULTI-FAMILY, TYPE "T",

WITH FLOOR PLAN (2 Sheets)



2-13



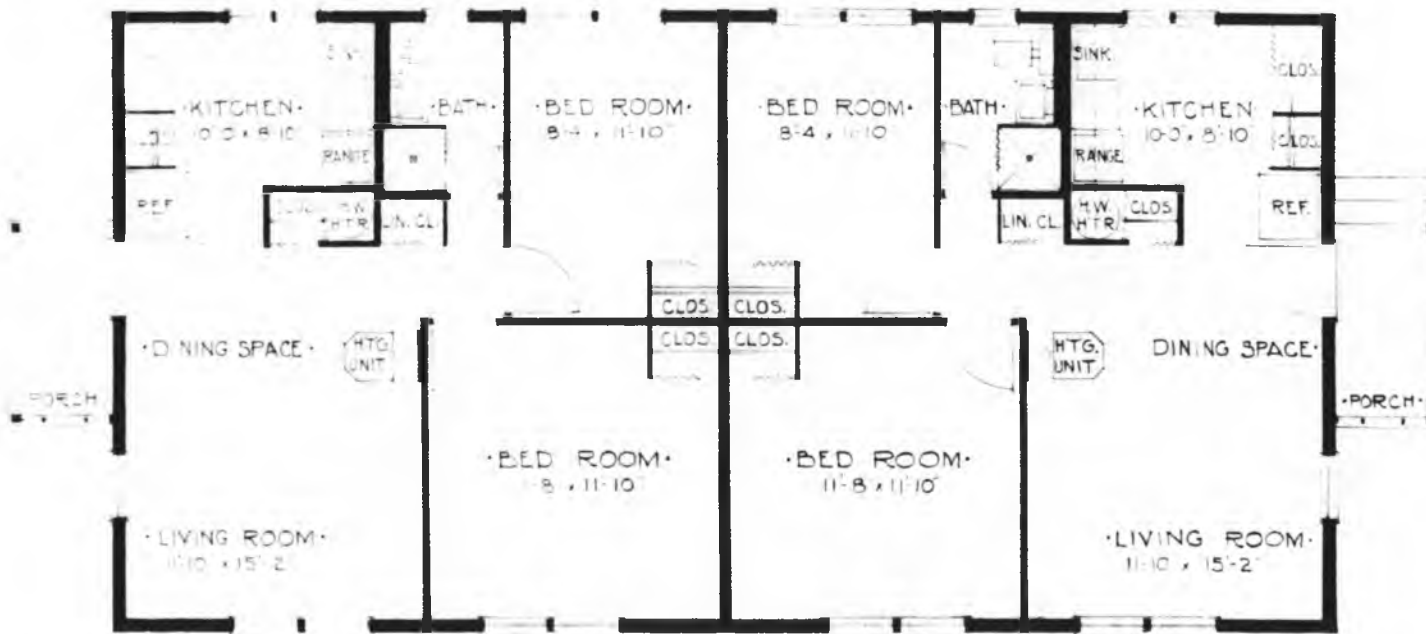
FLOOR PLAN
MULTIPLE HOUSING UNIT T

D-13

D-14 HOUSE, MULTI-FAMILY, TYPE "U",
WITH FLOOR PLAN (2 Sheets)



D-11-



• FLOOR PLAN •
 • MULTIPLE HOUSING UNIT U •

D-15 PREFABRICATED HOUSING



D-15

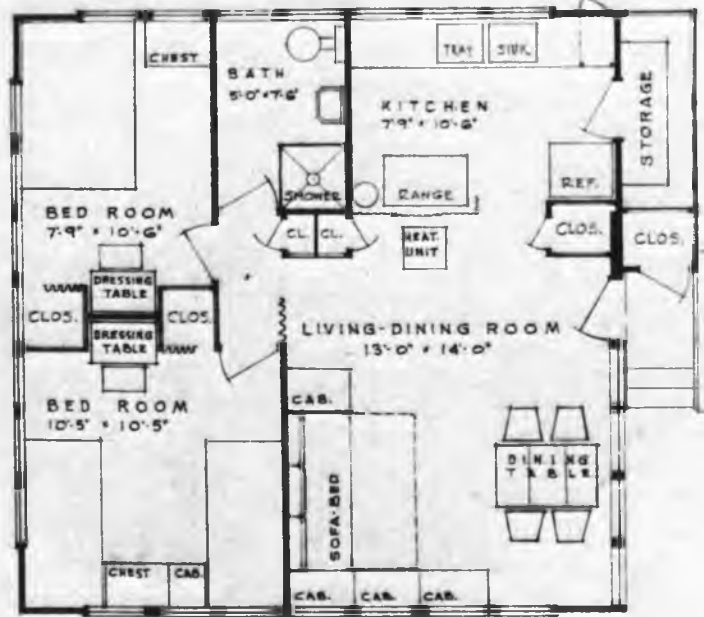
D-16 HOUSE, PREFABRICATED, TYPE "C-1", WITH FLOOR PLAN,
TYPES "C-1", "B-1", AND "A-6" (4 Sheets)



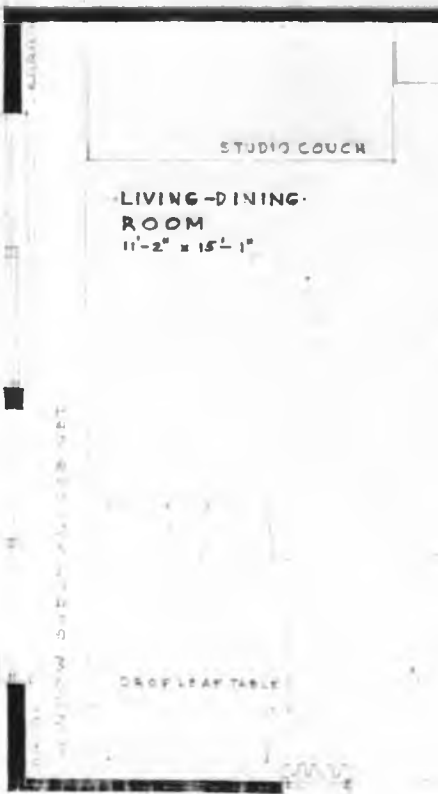




PREFABRICATED HOUSE: TYPE C-1



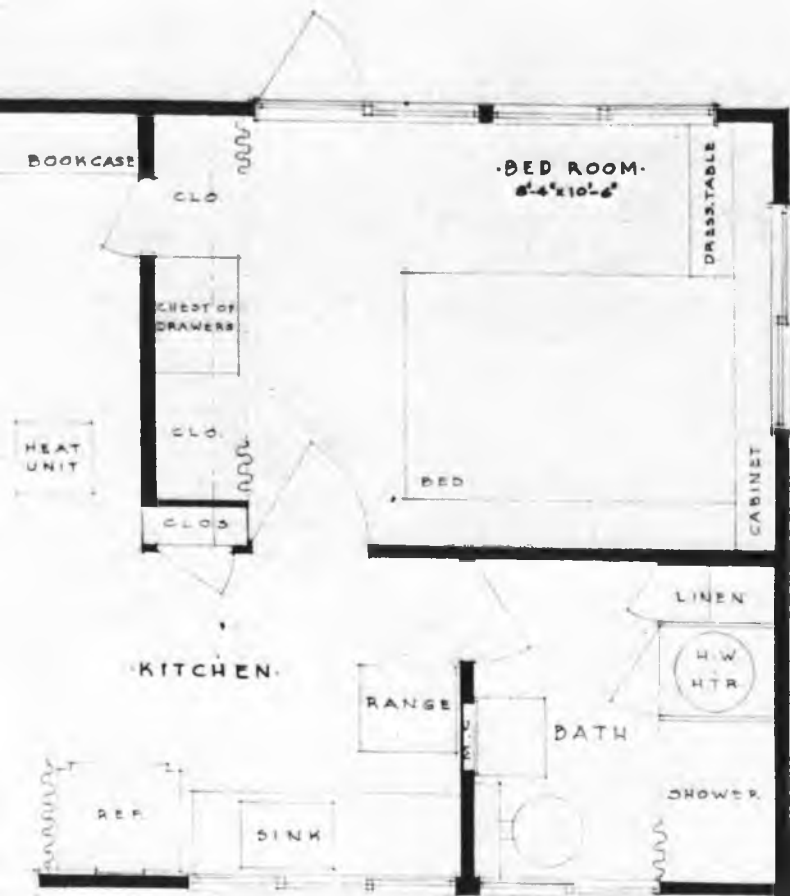
PREFABRICATED HOUSE-TYPE B-1



STUDIO COUCH

LIVING-DINING ROOM
11'-2" x 15'-1"

DROP LEAF TABLE



PREFABRICATED HOUSE TYPE A-6

D-16a HOUSE, PREFABRICATED, TYPE "V",
WITH FLOOR PLAN (2 Sheets)



14

BED ROOM

10'-8" x 10'-3"

LIVING ROOM

13'-0" x 11'-5"

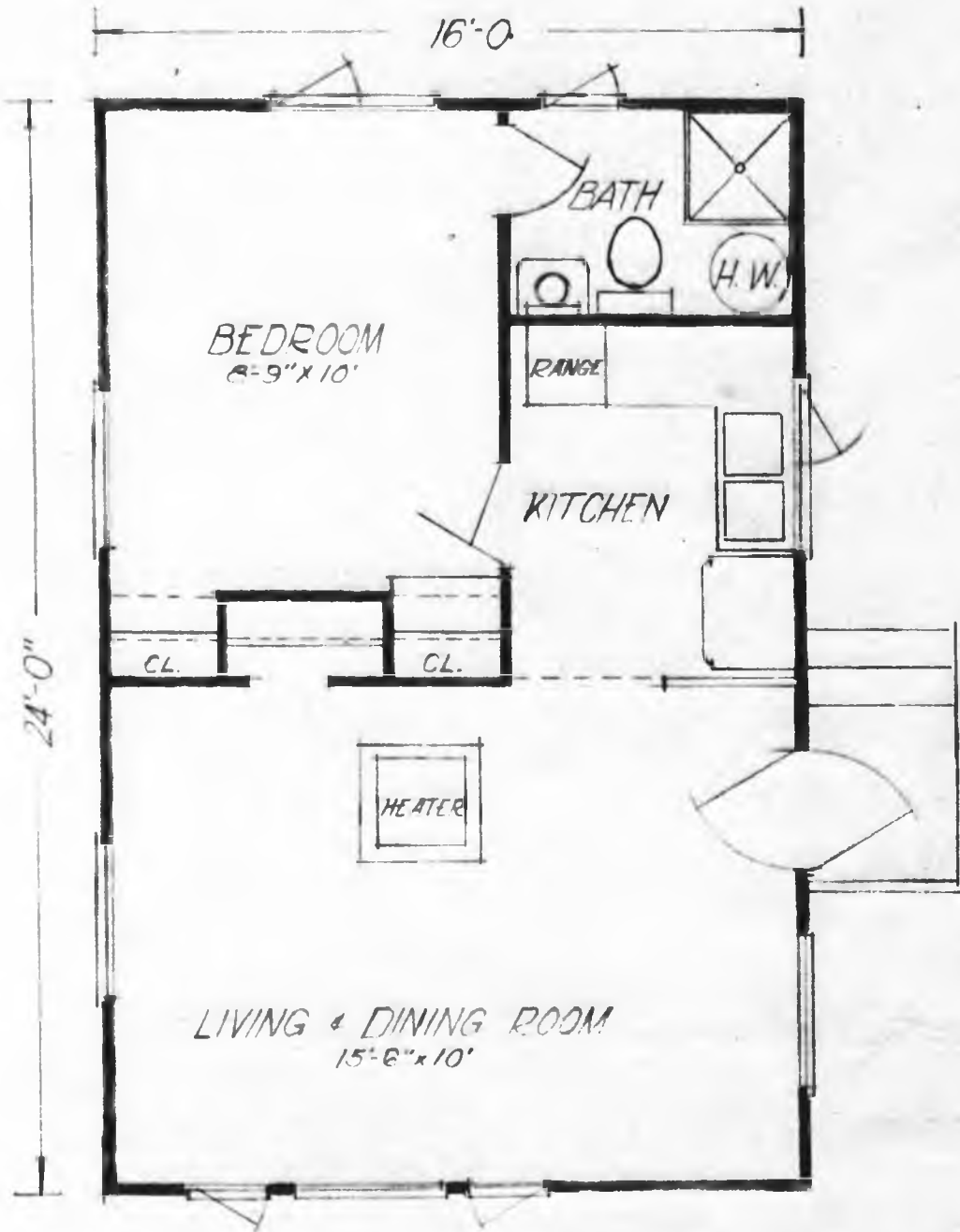
D-10a



FLOOR PLAN
HOUSING UNIT V

D-17 HOUSE, PREFABRICATED, TYPE "S",
WITH FLOOR PLAN (2 Sheets)





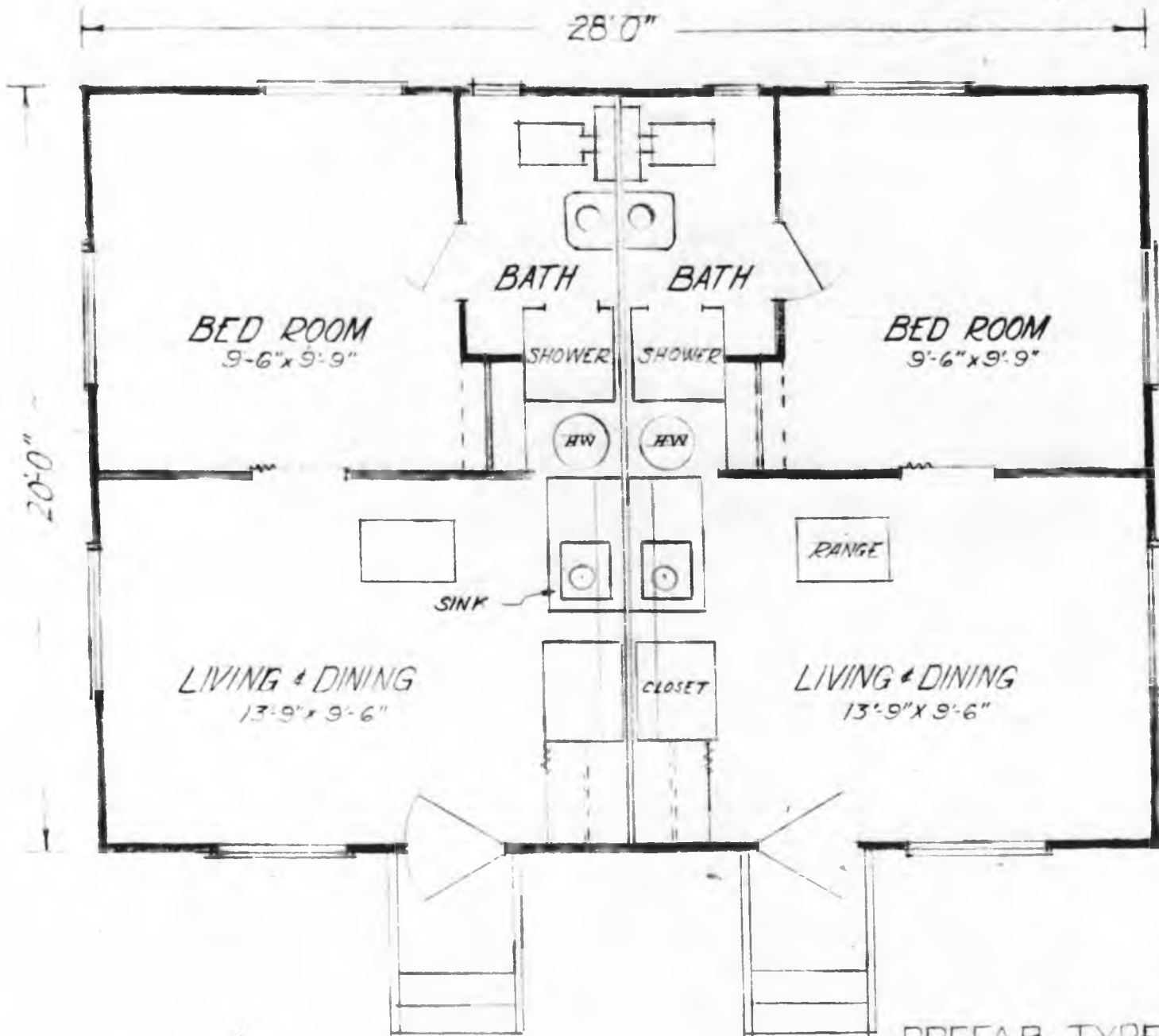
PREFAB HOUSE TYPE "S"
24' x 16' = 384 sf.

U.S.E.D. 900-73

D-18 HOUSE, PREFABRICATED, MULTI-FAMILY, ONE BEDROOM,
TYPE "VC-1", WITH FLOOR PLAN (2 Sheets)



D-1R



PREFAB TYPE VC-1 COTTAGE

28' x 20' = 560 sq. ft.

B-19 HOUSE, PREFABRICATED, ERECTION (4 Sheets)







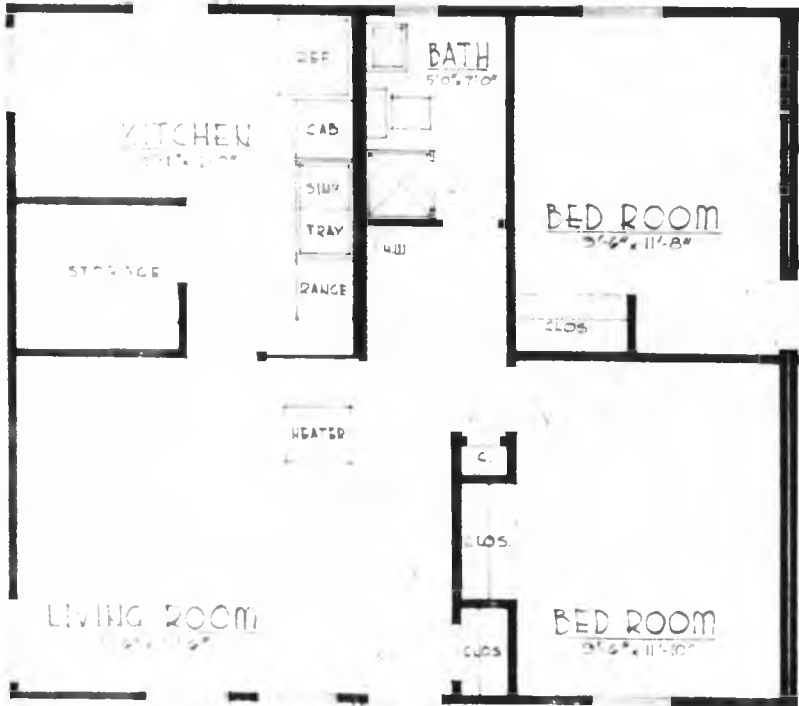


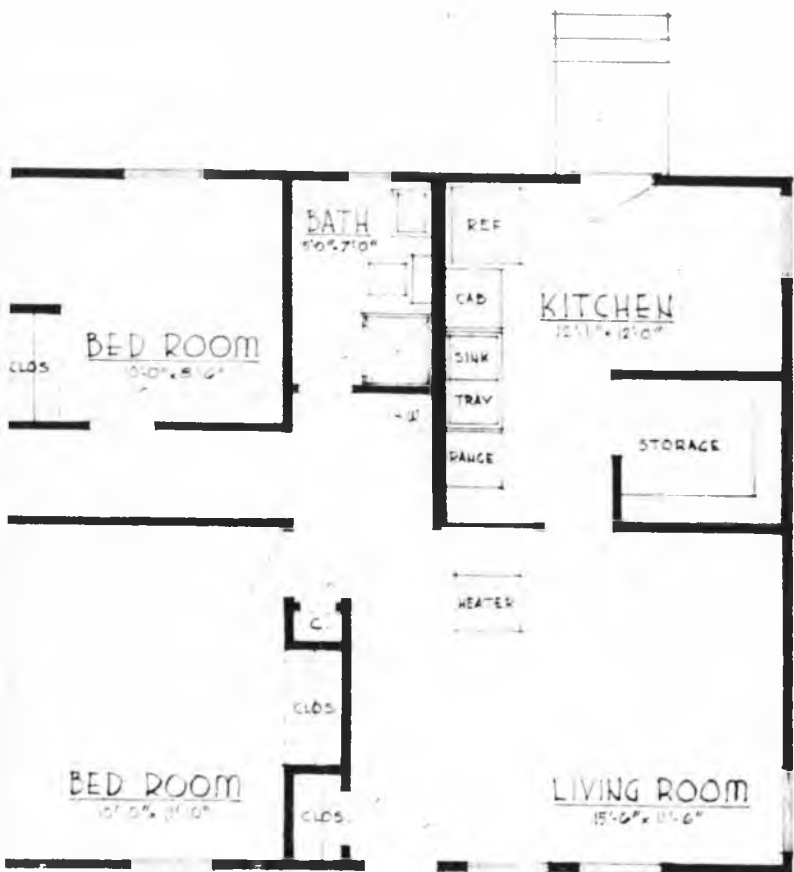
**D-20 HOUSES, DEMOUNTABLE, TDU, TYPES 2, 4, HL11, GF3, AND GF31,
WITH FLOOR PLANS (10 Sheets)**



D-204

(a) TYPE 2





FLOOR PLAN TYPE 2
 MULTIPLE HOUSING UNIT

T D U

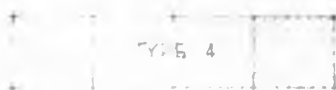


D-1005

(b) Type 2



THIS PLAN SHOWS ONE HALF OF UNIT. ↕
 OTHER HALF SIMILAR BUT REVERSED
 COMPLETE UNIT AS SHOWN BELOW



D-20b



FLOOR PLAN TYPE 4
 MULTIPLE HOUSING UNIT

T D U



D-202

(C) TYPE H.



D-20c



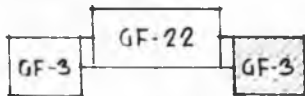
FLOOR PLAN HL-11
MULTIPLE HOUSING UNIT

TDU



D-200

(d) TYPE GF.3



THIS UNIT ALSO OCCURS IN COMBINATION WITH UNIT GF-22 AS SHOWN.

FLOOR PLAN **GF-3**
HOUSING UNIT

TDU



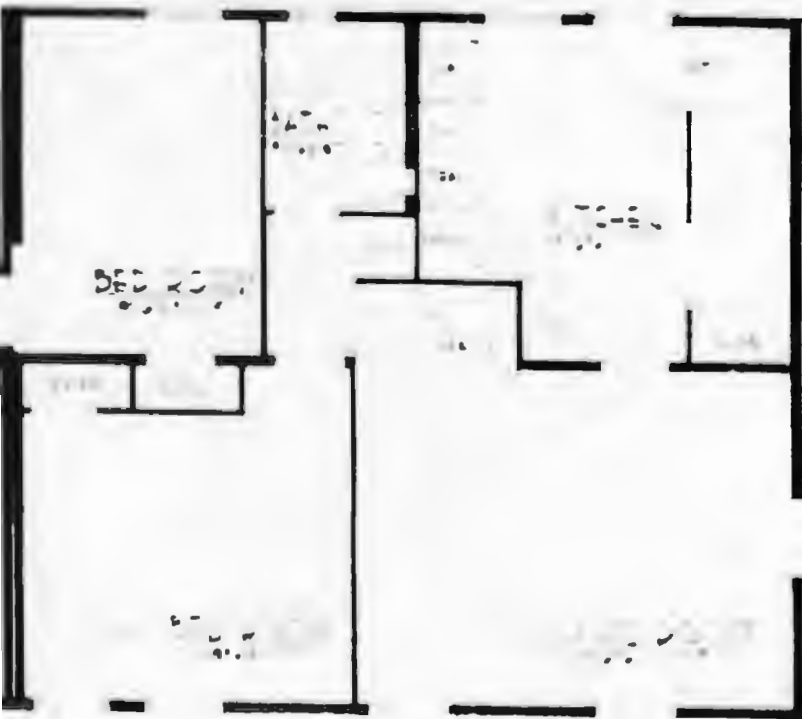
D-22c

(c) TYPE GF 31



3 BEDROOM UNIT

1



BED ROOM

GF-31

TDU

D-21 APARTMENTS (2 Sheets)



D-21



D-22 DORSATORY, TYPE "H"



D-22

D-23 DORMITORY, TYPE "S"



D-24 TRAILER



D-25 TRAILER CAMPS (2 Sheets)

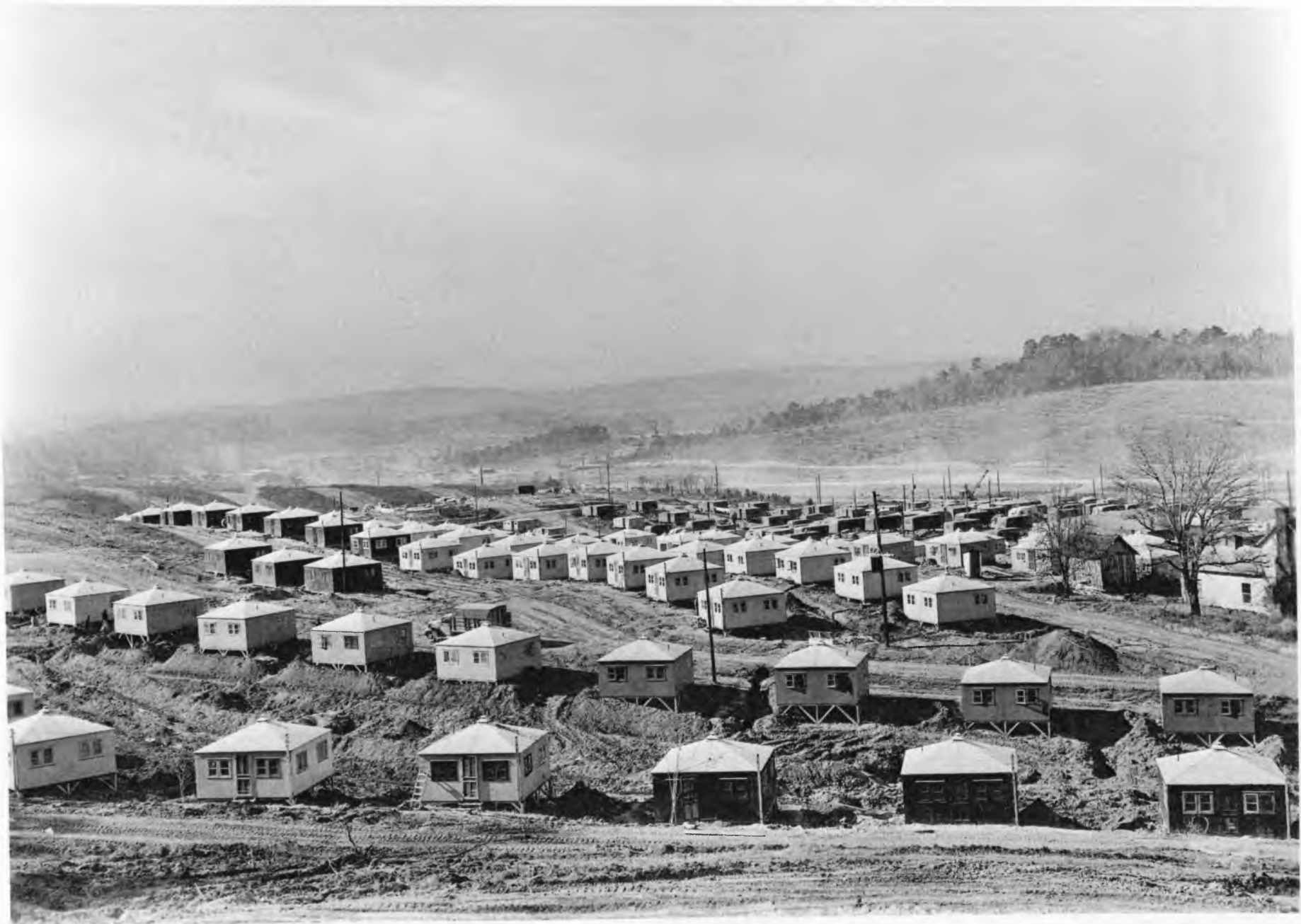




D-26 HUIHUI



D-27 HUTMENT AREA



D-28 JACKSON SQUARE AND VICINITY



D-23a COMMERCIAL AREA, JACKSON SQUARE



D-28b POST OFFICE



D-28 b



D-28c THEATERS AND STORES, JACKSON SQUARE



D-28c

**D-284 RESTAURANT, BOWLING ALLEYS, AND OFFICE BUILDINGS,
JACKSON SQUARE**



D-28. COMMERCIAL AREA, JACKSON SQUARE



D-28f PUBLIC LIBRARY



D-28g CENTRAL CAFETERIA



D-289

D-29 COMMERCIAL AREA, GROVE CENTER

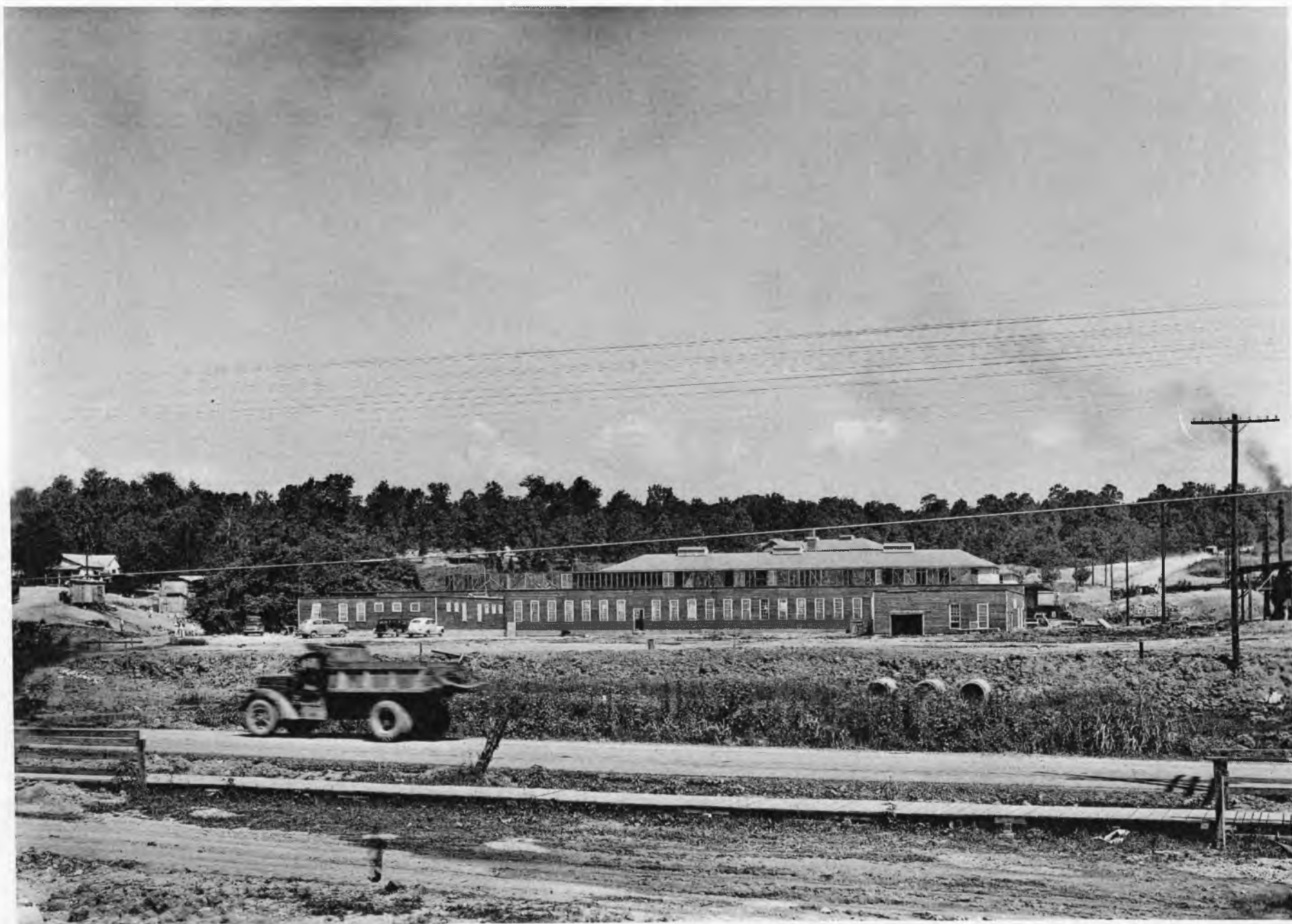


D-30 NEIGHBORHOOD STORES AND FIRE STATION, WEST VILLAGE



D-30

D-31 LAUNDRY NO. 1, TOWN CENTER



D-31

D-31a LAUNDRY NO. 2, WEST VILLAGE



D31A

D-32 MAIN ADMINISTRATION BUILDING, MANHATTAN DISTRICT



D-33 MAIN WAREHOUSE DISTRICT





D-35 HIGH SCHOOL (2 Sheets)





D-36 ADMINISTRATIVE AND TOWN CENTER AREAS



D-36

D-37 HOSPITAL



D-38 PUMPING STATION, CLINCH RIVER



D-39 FILTRATION PLANT



D-40 BUSES



WAR WORKER COACH



CITY TRANSIT BUS



TRAILER TRAIL



BODY-COM-TR 1973 01