



THE BLACK VAULT

This document was obtained from The Black Vault, an online database of declassified government documents. This particular record is housed in the MKULTRA/Mind Control Collection, a compilation of more than 20,000 pages declassified by the Central Intelligence Agency (CIA).

The entire collection is free to download and online at:

<http://mkultra.theblackvault.com>

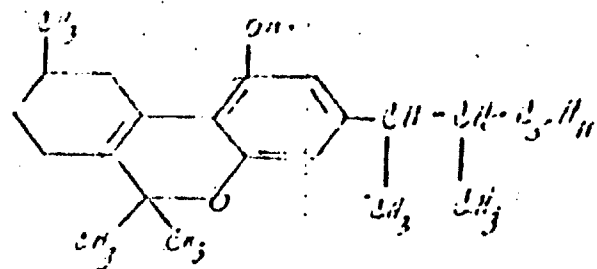
Chemical Structure	Range (ppm) P.O.	IR Range (cm⁻¹) P.O.	NMR Range (ppm) P.O.	Solubility P.O.
	500 m/lk: -very de- scribed, ptasls 1000 m/lk: } 1500 " " } 2000 " " } above	200-400 cm⁻¹, strong absorption 1600-1700 cm⁻¹, weak 1000-1300 cm⁻¹, also strong	7.0-8.0 ppm, aromatic 2.0-3.0 ppm, aliphatic	Soluble in organic solvents
		200-400 cm⁻¹, strong absorption 1600-1700 cm⁻¹, weak 1000-1300 cm⁻¹, also strong	7.0-8.0 ppm, aromatic 2.0-3.0 ppm, aliphatic	Soluble in organic solvents
		200-400 cm⁻¹, strong absorption 1600-1700 cm⁻¹, weak 1000-1300 cm⁻¹, also strong	7.0-8.0 ppm, aromatic 2.0-3.0 ppm, aliphatic	Soluble in organic solvents
		200-400 cm⁻¹, strong absorption 1600-1700 cm⁻¹, weak 1000-1300 cm⁻¹, also strong	7.0-8.0 ppm, aromatic 2.0-3.0 ppm, aliphatic	Soluble in organic solvents

B-356

Pharmacokinetic Parameters	Conditioned response rats 50 p.o.	Tryptamine Antagonism rats p.o.	Tryptamine Potentiation rats p.o.	Secondary rats p.o.
	500 mg/kg = 100% UR = 10% side effects very depressed, hypotonia, sl. ataxia			
	50 mg/kg = 37.5% UR = 0%			
	50 mg/kg = 37.5% UR = 25% maximum specific block = 75%			
	50 mg/kg = 100% UR = 12.5%			

10115, red
10115

10115



Mouse Dose
Range P.O.

1 mg/kg-sl. red.
SMA, somnolent
10 mg/kg-mkd. ↓
SMA, low posture,
mod. dyspnea,
ptosis, catalepsy
100 mg/kg-diuresis,
augmented earworth
freese, catalepsy
500 mg/kg-Fatal
dose

Lat. Dose
Range P.O.

5 mg/kg-L. S. E.
10 mg/kg-mod. ↓
SMA, somnolent,
tolerate hand-
ling abuse, diure-
sis
25 mg/kg-mkd.
effects as above,
catalepsy, sl.
ptosis
250 mg/kg-loss
sineal reflex,
low posture

Monkey Dose
Range P.O.

2.5 mg/kg-1/1 no effect
5 mg/kg-1/1 sl. ↓ SMA
10 mg/kg-1/1 mkd. ↓ SMA
aggressiveness and hos-
tility absent, somno-
lent, mod. to mkd. weak-
ness, ataxia. Duration
72 hours

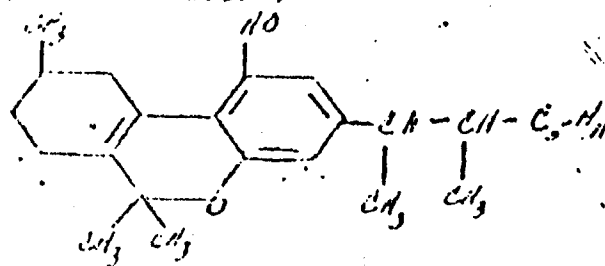
Lat. Dose
Range P.O.

1 mg/kg-sl. to
mod. ataxia
10 mg/kg-ataxia,
anesthesia, pro-
stration, sl.
diuresis

B-355

10133

From condensation
(isomer of #5390)

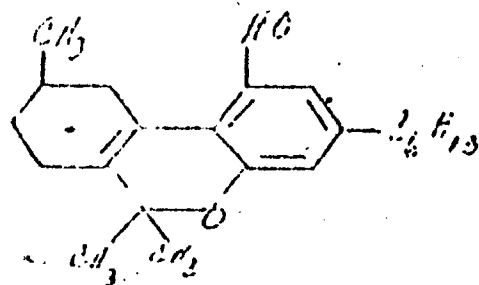


5 mg/kg-No effect
10 mg/kg-mod. ↓ SMA
25 mg/kg-mkd. ↓ SMA,
low posture, sl.
ptosis

5 mg/kg-sl. ↓ SMA
25 mg/kg-mkd. ↓ SMA,
low posture, 1/2
sl. ptosis, 1/2
mod. ptosis

2.5 mg/kg-1/1 no effect
5 mg/kg-1/1 mod. ↓ SMA,
subdued behavior
10 mg/kg-1/1 mod. ↓ SMA,
subdued behavior

10113
(pyrrolidyl)



3.125 mg/kg } no
↓ effect
200 mg/kg }
100 mg/kg-mod. to
mkd. ↓ SMA, low pos-
ture, incr. diure-
sis

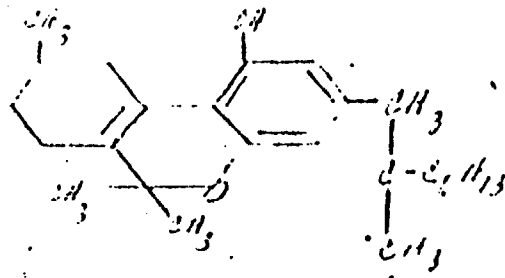
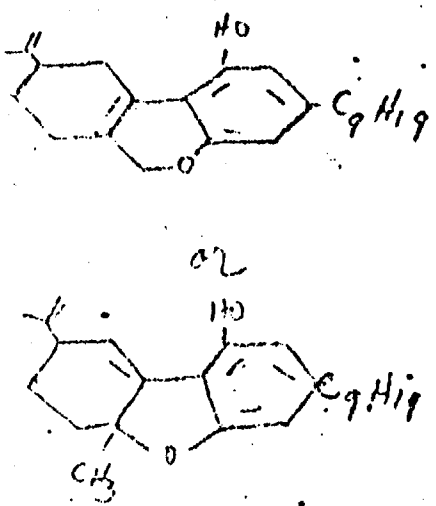
12.6 mg/kg-no
effect
25 mg/kg-2/2 sl.--
mod. ↓ SMA, low pos-
ture
50 mg/kg-1/2 mod. ↓
SMA, low posture,
hypersensitive to
touch
100 mg/kg-2/2 mkd. ↓
SMA, hypersensitive
to touch, 1/2 sl.
ptosis, catalepsy
200 2/2 mkd. ↓ SMA, low
posture, 1/2 stance, hy-
persensitive to touch. 300-same as above

South Island Tablets 100 P.O.	Propofol Tablets P.O.	Propofol Tablets P.O.	Catechol Tablets P.O.	Anti-Inflammatory (appropriate activity)	Anti-Inflammatory Tablets
10.2 mg/kg (3.6-10.9)	25 mg/kg-no protection 100 mg/kg- 3/5 protected	25 mg/kg=0% 100 mg/kg=3/5 protected	ED ₅₀ 17 mg/kg (10.6-27.2)	10 or 25 mg/kg = 0%	10 mg/kg-P.O. - sig- nificant effects on foot temperature and pain threshold
29.7 mg/kg (9.8-1.88)	500 mg/kg=10% 1000 mg/kg=70% UR not affected	100 mg/kg=0%	ED ₅₀ 31 mg/kg (18.2-52.7)	25 mg/kg=0% protection	50 mg/kg-no effect Agent effect on tem- perature, pain thresh- old and edema

Aspirin - 5 min Analgesia Rats	MES Mice P.O.	Picrotoxin potentiation Rats P.O.	Light Fox SUA Mice p.o.	Rage (mice) p.o.	anti-Melanzol Rats P.O.
ED ₅₀ =25 mg/kg	ED ₅₀ =28 mg/kg	100 mg/kg=0%	DD ₅₀ =20 mg/kg	ED ₅₀ =0.3 mg/kg	30 mg/kg=10% protection
ED ₅₀ =55 mg/kg	100 mg/kg= 80% (not at peak effect)	100 mg/kg=0%	DD ₅₀ =103 mg/kg		
ED ₅₀ =1.8 mg/kg	250 mg/kg=0%			250 mg/kg= 10%	

P.O.
kg-dl. to
atonia
/kg-atonia,
hesia, pres-
on, sl.
sis

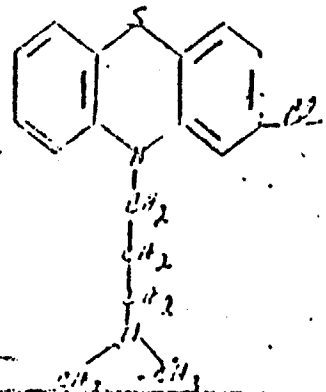
B-355

S.M.F. No. and Structure	House Dose Range p.o.	Rat Dose Range p.o.	Monkey Dose Range p.o.	Dog Dose Range p.o.
<p>S.M.F. 75393</p> 		<p>200-low posture, prostrate, mkd. cyanosis, 1/2 dead 400-prostrate, corneal, placing, myotactic and righting reflexes absent</p>		<p>B-354</p>
<p>S.M.F. 711722</p> <p>(Structure uncertain) ? mixture</p> 		<p>3.125 mg/kg } 6.25 " } No 12.5 " } affect 25 " } 50-sl. ↓ SFA, str. hypotonia 100-mkd. ↓ SFA, low posture, mod. hypotonia, 1/2 sl. ptosis, 1/2 mkd. ptosis 200-mkd. ↓ SFA, mkd. hypotonia, mod. to mkd. ptosis, catalepsy</p>		

Formulations Presented Mice	Conditioned Response Rats	Trypamine Antagonism Rats	Trypamine Potentiation Rats	Galvanic Rats
	50 mg/kg=100% UR=100% maximum specific block=75%			

Anti-Inflammatory Rice p.o.	Anti-Inflammatory Rats p.o.	Analgesia D'Amour-Smith Rats p.o.	MES Rice p.o.	Picrotoxin Potentiation	Light Box Rice p.o.	Rare Rice p.o.	Anti-Inflammatory Rats p.o.
		ED ₅₀ = 36 mg/kg	250 mg/kg 20%			25 mg/kg 0%	

B-353

SDF No. and Structure	Mouse Dose Range p.o.	Rat Dose Range p.o.	Monkey Dose Range p.o.	Dog Dose Range p.o.
<p data-bbox="380 341 556 381">SDF #2601</p> <p data-bbox="380 406 583 446">(Thorazine)</p> 	<p data-bbox="1045 349 1398 422">5 mg/kg-sl. to mod. ↓ activity</p> <p data-bbox="1045 422 1398 462">10 mg/kg-mkd. ↓ SIA</p>	<p data-bbox="1439 349 1724 389">10 mg/kg-sl. ↓ SIA</p> <p data-bbox="1439 389 1724 430">25 mg/kg- mkd. ↓ SIA</p>	<p data-bbox="1778 349 2104 430">5 mg/kg-3/3 no effect</p> <p data-bbox="1778 430 2104 470">10 mg/kg-1/3 drowsy, ptosis, mkd. catalepsy, reduced aggression</p>	<p data-bbox="2159 349 2403 389">5 mg/kg-normal</p> <p data-bbox="2159 389 2403 430">10 mg/kg-stiff</p> <p data-bbox="2159 430 2403 470">leaved, ataxia, depressed, body sway, relax. nictitating membrane</p>

Conditioned Response Rats p.o.	ED ₅₀ =3.75 mg/kg	Tryp Levlins Antagonism Rats p.o.	ED ₅₀ =12 mg/kg	Tryp Levlins Potentiation Rats p.o.	ED ₅₀ =13 mg/kg	Gaba Lepny Rats p.o.	ED ₅₀ =12.5 mg/kg	Anti-Inf... Mice p.o.	2 to 10 mg/kg 100% protection
-----------------------------------	------------------------------	--------------------------------------	----------------------------	--	----------------------------	-------------------------	------------------------------	--------------------------	----------------------------------

