

## CHAPTER 3

### GUARD COMPOSITION

---

#### **5. General**

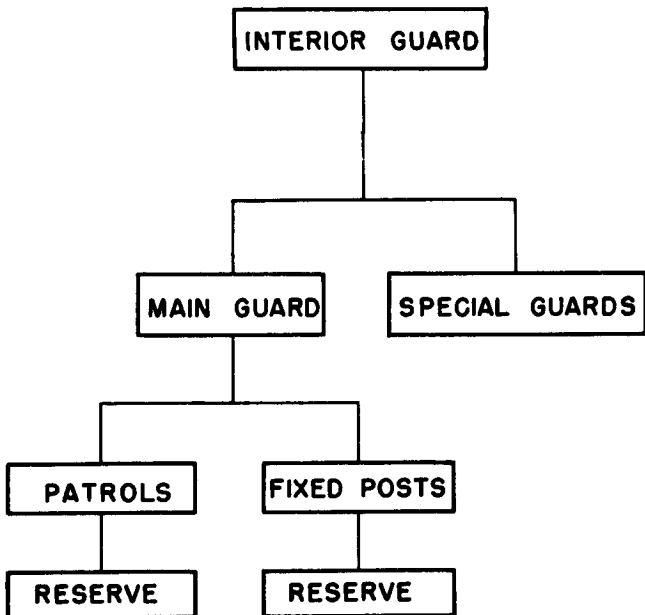
The guard may be one of two types, interior guard (part two) or exterior guard (part three).

#### **6. Interior Guard**

An *interior guard* is detailed by commanders of military installations to protect property and enforce specific military regulations. The installation commander is responsible for the interior guard of the installation and he prescribes the composition of the guard. When brigades and separate units are responsible for an interior guard within their own areas, their composition, duties, and responsibilities are similar to those outlined in this manual. Commanders of units furnishing personnel for guard are responsible to insure that these men are qualified or familiar with the weapon they use on guard. The elements of an interior guard are classified according to their purpose. They include the main guard and special guards. The main guard consists of a combination of patrols and fixed posts. Special guards are used, to protect parks, trains, boats, aircraft, and for other special purposes (fig 1).

## 7. Exterior Guard

This is a term used in this manual to differentiate from interior guard. Exterior guards are those guards whose duties and responsibilities are different from those set down for interior guards. Exterior guard is not as formal and restricted as interior guard. Classified as exterior guards are lookouts, listening posts, outposts, specifically designated patrols, and other guards in combat zones, field training areas, and guards outside the limits of a military installation. Exterior guards perform their duties as prescribed by special orders and instructions.



*Figure 1. General breakdown of interior guard.*